

KWAZULU-NATAL PROVINCIAL TREASURY

IGR UNIT

Tel: 033 897 4249



MONTHLY ECONOMIC NEWS LETTER September 2010

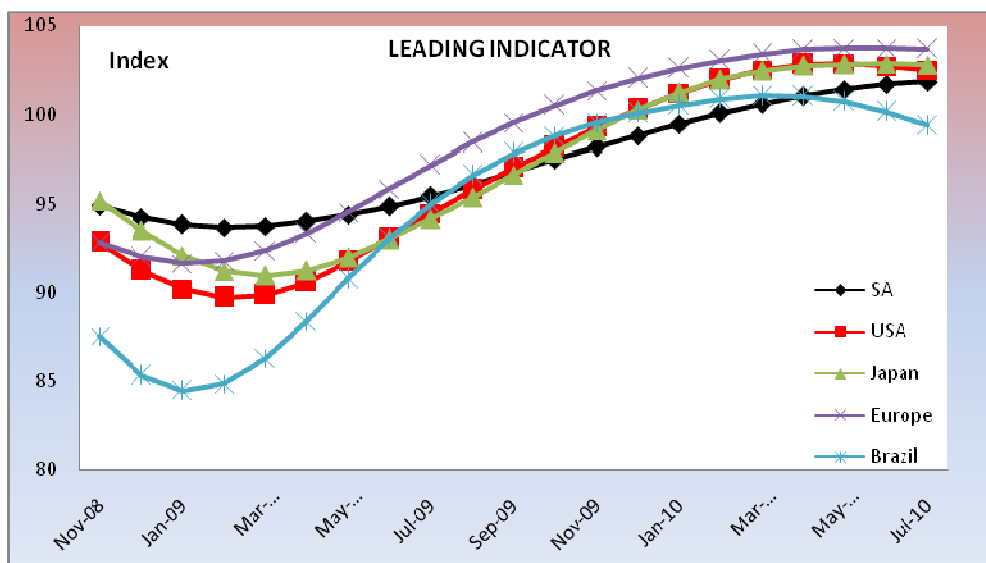
World Economic Snapshot

Country	GDP Billions US\$	GDP Growth	Interest Rate	Inflation Rate	Jobless Rate	Current Account	Exchange Rate
United States	14,256	1.70%	0.25%	1.10%	9.60%	-123	82.92
Euro Area	12,456	1.00%	1.00%	1.60%	10.00%	-25	1.35
Japan	5,068	0.37%	0.10%	-0.90%	5.20%	1,047	84.23
China	4,909	10.30%	5.31%	3.50%	4.20%	70,500	6.69
Germany	3,347	2.20%	1.00%	1.00%	7.60%	2	1.35
France	2,649	0.70%	1.00%	1.40%	10.00%	-2	1.35
United Kingdom	2,175	1.20%	0.50%	3.10%	7.80%	-10	1.59
Italy	2,113	0.40%	1.00%	1.40%	8.50%	-4,393	1.35
Brazil	1,572	1.20%	10.75%	4.49%	6.70%	-3,000	1.71
Spain	1,460	0.20%	1.00%	1.90%	20.00%	-5	1.35
Canada	1,336	0.50%	1.00%	1.70%	8.10%	-11	1.02
India	1,296	8.80%	5.00%	11.25%	8.00%	-13	45.02
Russia	1,231	5.20%	7.75%	6.10%	6.80%	33,318	30.56
South Korea	929	1.50%	2.25%	2.60%	3.70%	5,038	1152.50
Australia	925	1.20%	4.50%	3.10%	5.10%	-5,640	0.96
Mexico	875	3.22%	4.50%	3.64%	5.50%	-1	12.51
Netherlands	792	0.90%	1.00%	1.60%	5.50%	12,372	1.35
Turkey	617	3.70%	6.50%	8.33%	10.50%	-3,438	1.47
Indonesia	540	2.80%	6.50%	6.40%	7.41%	1,834	8945.00
Switzerland	500	0.85%	0.25%	0.29%	3.90%	20	0.98
Belgium	469	0.70%	1.00%	2.57%	8.60%	-1	1.35
Poland	430	1.10%	3.50%	2.00%	11.30%	-1,064	2.93
Sweden	406	1.90%	0.50%	0.90%	7.40%	64	6.79
Austria	385	0.90%	1.00%	1.80%	3.90%	1,073	1.35
Norway	382	0.10%	2.00%	1.90%	3.60%	97,648	5.87
Saudi Arabia	369	0.60%	2.00%	5.51%	10.50%	22,765	3.75
Greece	330	-1.50%	1.00%	5.50%	11.00%	250	1.35
Venezuela	314	9.70%	17.98%	30.90%	8.40%	7,181	4294.65
Denmark	310	0.50%	0.75%	2.30%	4.20%	8	5.52
Argentina	309	3.00%	9.93%	11.10%	7.90%	3,100	3.95
South Africa	286	3.20%	6.50%	3.70%	25.30%	-116,132	6.98
Thailand	264	0.20%	1.50%	3.40%	1.54%	681	30.58
United Arab Emirates	261	-2.10%	1.80%	11.10%	20.60%	82	3.67
Finland	238	-0.40%	1.00%	1.10%	8.50%	1	1.35
Colombia	231	1.00%	3.00%	2.24%	12.80%	-1,396	1811.50
Portugal	228	0.30%	1.00%	1.90%	10.60%	-2,057	1.35
Ireland	227	2.66%	1.00%	-0.10%	13.70%	-1,622	1.35
Hong Kong	215	2.40%	0.50%	1.30%	4.20%	26	7.76
Israel	195	1.17%	1.75%	1.80%	6.20%	1,584	3.69
Malaysia	192	-2.60%	2.75%	1.90%	3.70%	30,449	3.09
Czech Republic	190	0.80%	0.75%	1.90%	8.60%	-1,153	18.42
Singapore	182	24.00%	0.03%	3.10%	2.30%	14,942	1.32
Pakistan	167	2.00%	13.00%	12.69%	5.50%	-1,548	86.12
Chile	164	4.30%	2.50%	2.90%	8.50%	47	485.75
Hungary	129	0.00%	5.25%	3.70%	11.10%	344	205.93
Peru	127	10.40%	3.00%	1.82%	7.60%	267	2.79
New Zealand	125	0.20%	3.00%	1.80%	6.80%	0	0.74

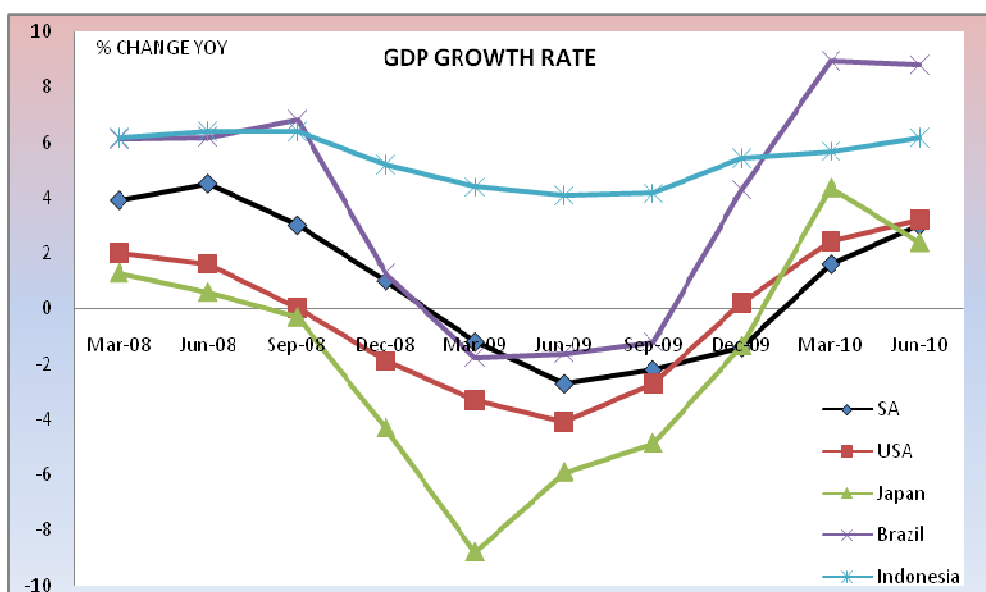
Luxembourg	52	-2.60%	1.00%	2.47%	5.30%	1,858	1.35
Slovenia	48	-0.50%	1.00%	2.10%	10.50%	-79	1.35
Iceland	12	0.60%	8.00%	4.80%	7.60%	-27	114.39

Source: Trading Economics, <http://www.tradingeconomics.com/default.aspx>

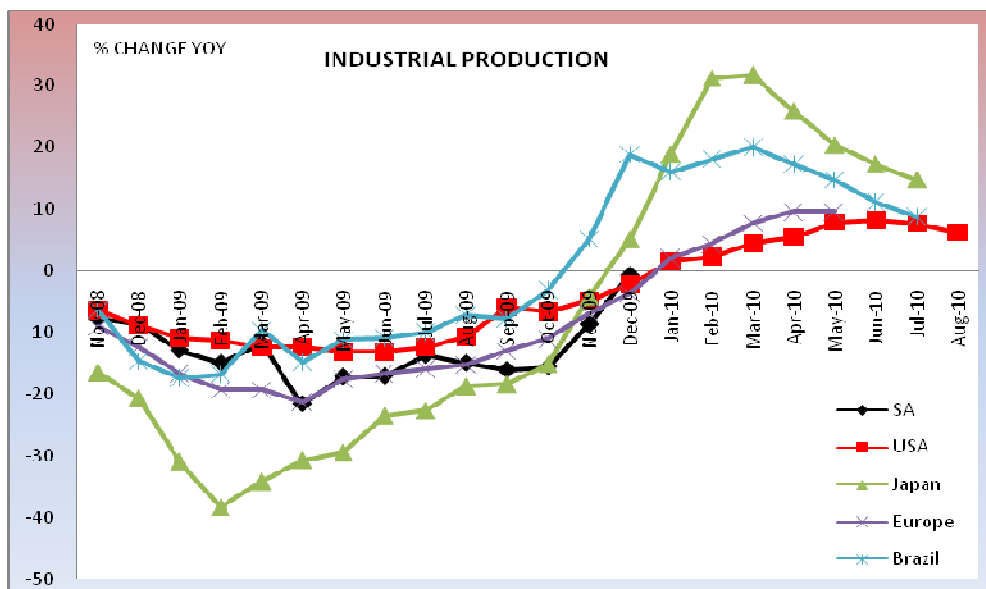
MACROECONOMIC INDICATORS



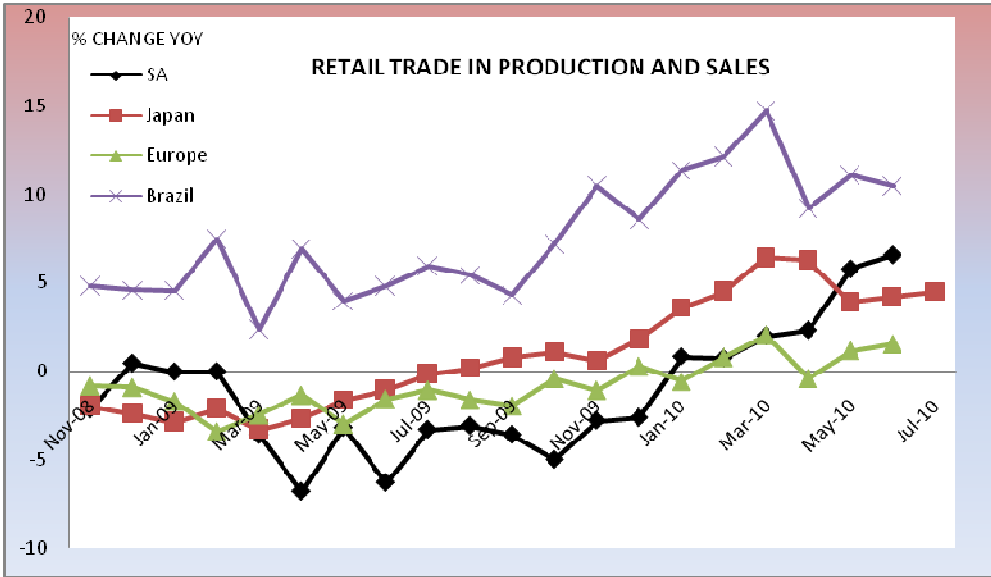
	Jun-10	Jul-10
Russia	101.84	101.95
Sweden	103.91	104.42
India	100.74	100.56
Turkey	103.64	103.42
Hungary	102.16	102.33
Indonesia	101.09	100.92
Australia	102.75	103.00
Korea	103.08	102.82
China	102.45	102.08



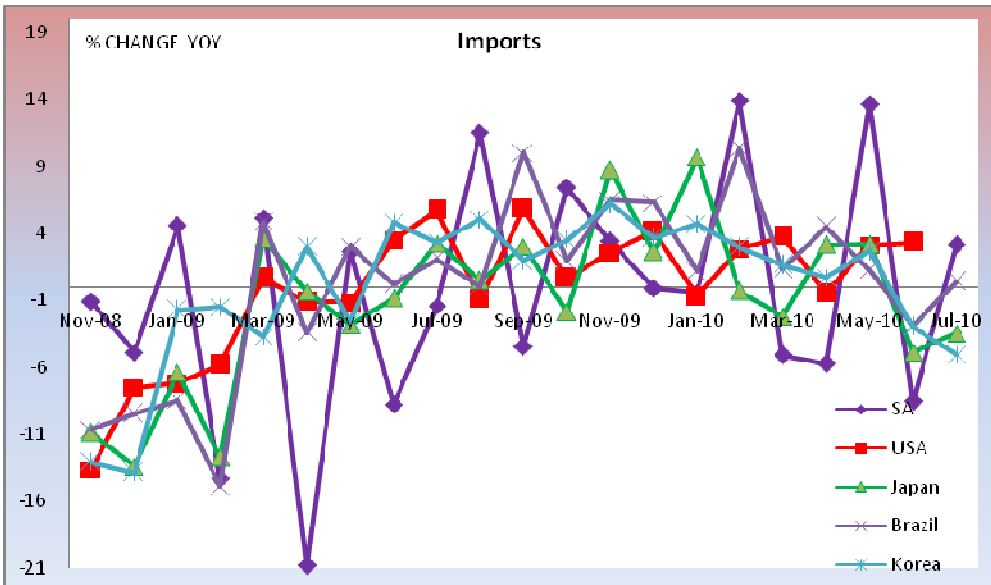
	Mar-10	Jun-10
Russia	3.10	5.20
Sweden	2.70	4.60
Brazil	8.95	8.80
India	7.40	-
Turkey	11.70	10.30
Hungary	0.20	0.80
Australia	2.70	3.30
Korea	8.10	7.20
China	11.90	10.30



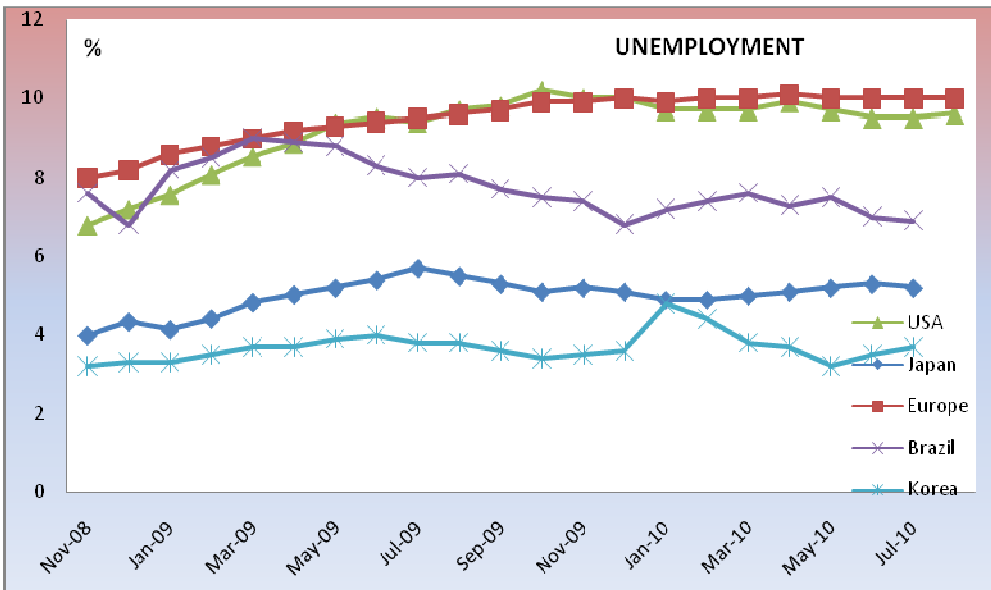
	Jun-10	Jul-10
Russia	9.7	5.9
Sweden	12	14.4
India	5.8	13.8
Turkey	10.2	8.6
Hungary	15.2	11.5
Indonesia		
Korea	16.9	15.5
China	13.7	13.4



	Jun-10	Jul-10
USA	4.36	-
Brazil	10.49	-
Sweden	2.57	1.52
Hungary	-5.25	-
Korea	4.03	8.30
Russia	5.84	6.54

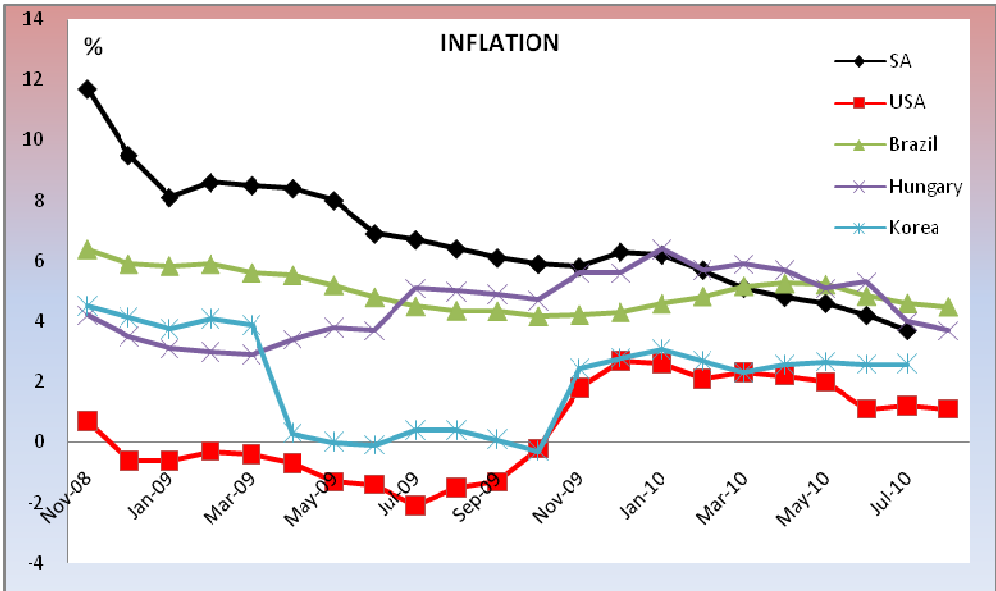


	Jun-10	Jul-10
Europe	0.16	-
Sweden	0.29	-4.34
India	-	-
Turkey	4.37	0.11
Hungary	-0.39	-
Indonesia	10.76	4.40
Australia	-5.79	7.49

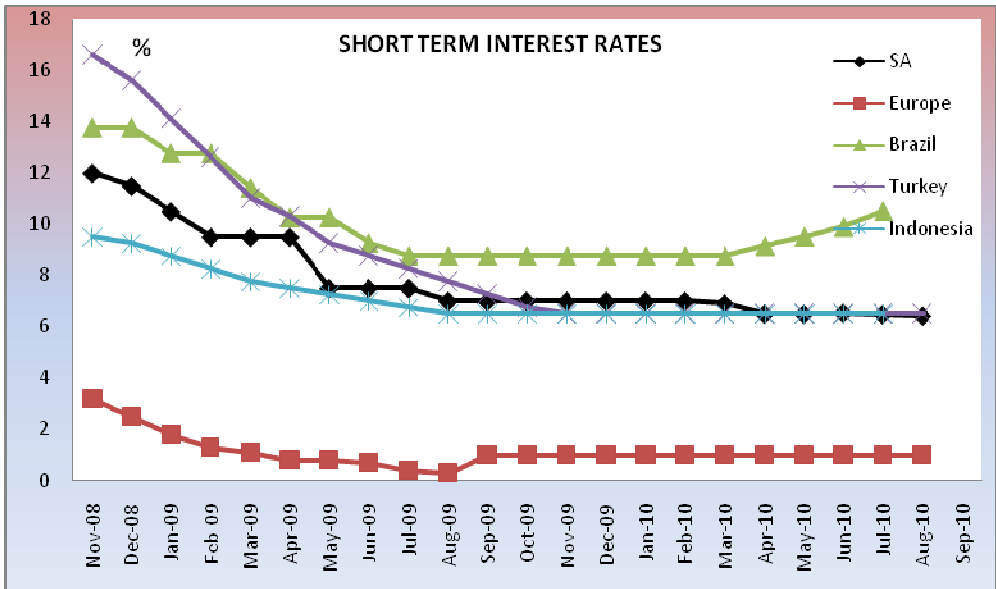


	Jul-10	Aug-10
Russia	-	-
Europe	10.00	10.00
Sweden	8.00	6.70
Hungary	5.20	-
Australia	5.30	5.10
South Africa	-	-
India	9.50	9.60

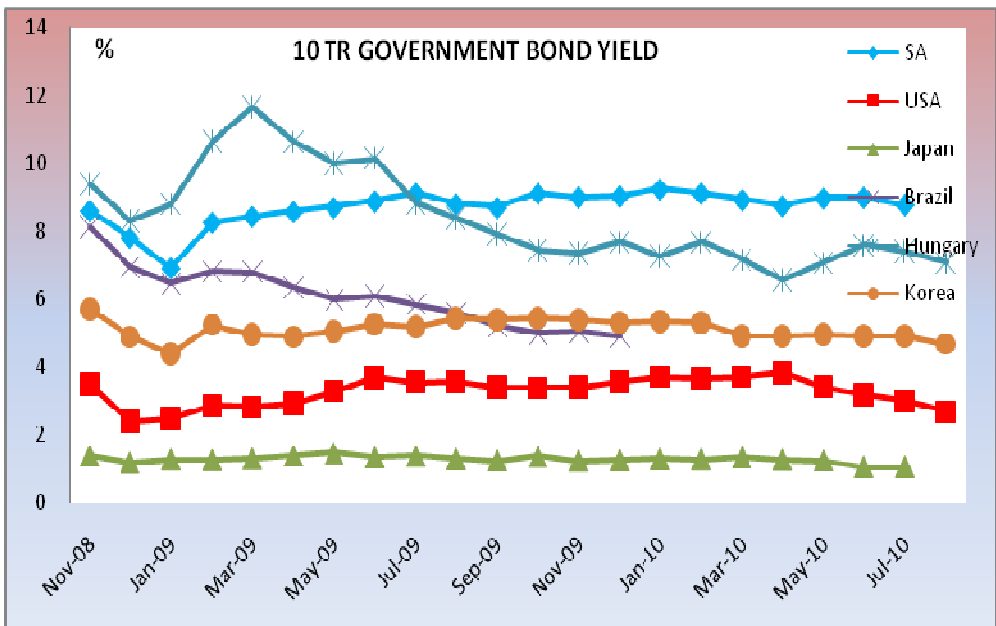
MONETARY INDICATORS



	Jul-10	Aug-10
Japan	-0.90	-
Russia	5.50	6.1
Europe	1.70	1.6
Sweden	1.10	0.9
India	11.25	-
Turkey	7.58	8.33
Hungary	4.00	3.7
Indonesia	6.22	6.4
Australia	-	-
China	3.30	3.5



	Jul-10	Aug-10
USA	0.25	0.25
Japan	0.10	0.10
Russia	7.75	7.75
Sweden	0.25	-
India	3.98	4.50
Hungary	5.29	5.25
Australia	4.50	4.50
Korea	2.25	2.25
China	5.31	5.31



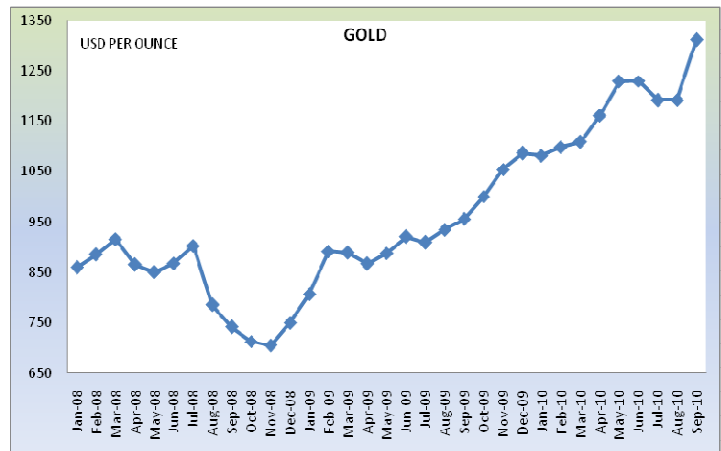
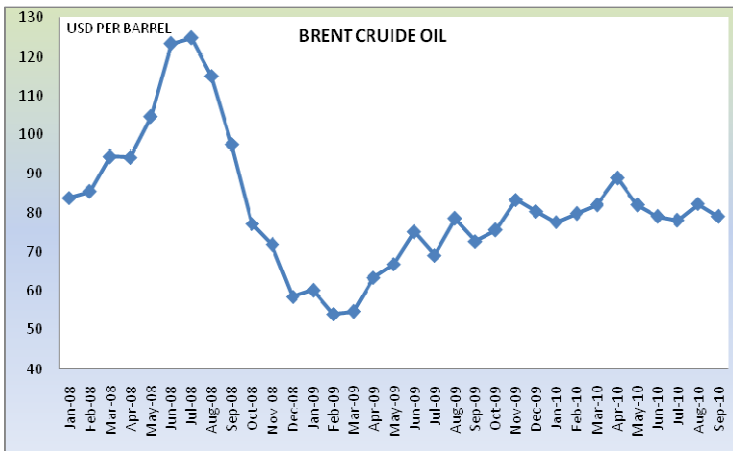
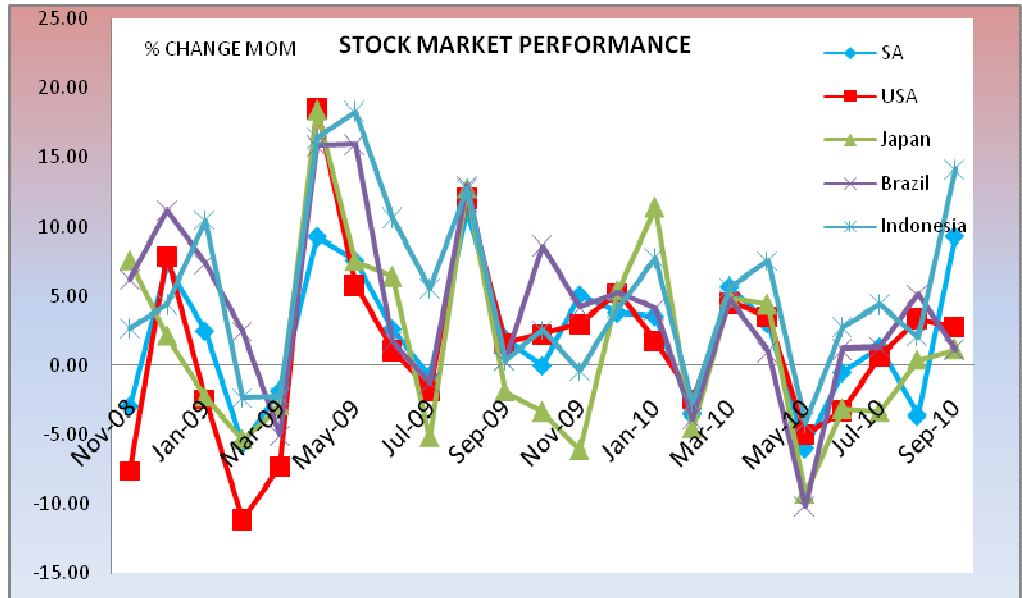
	Jul-10	Aug-10
Russia	7.26	-
Sweden	2.7	2.45
Brazil	-	-
India	-	-
Hungary	7.39	7.07
Australia	5.14	4.98

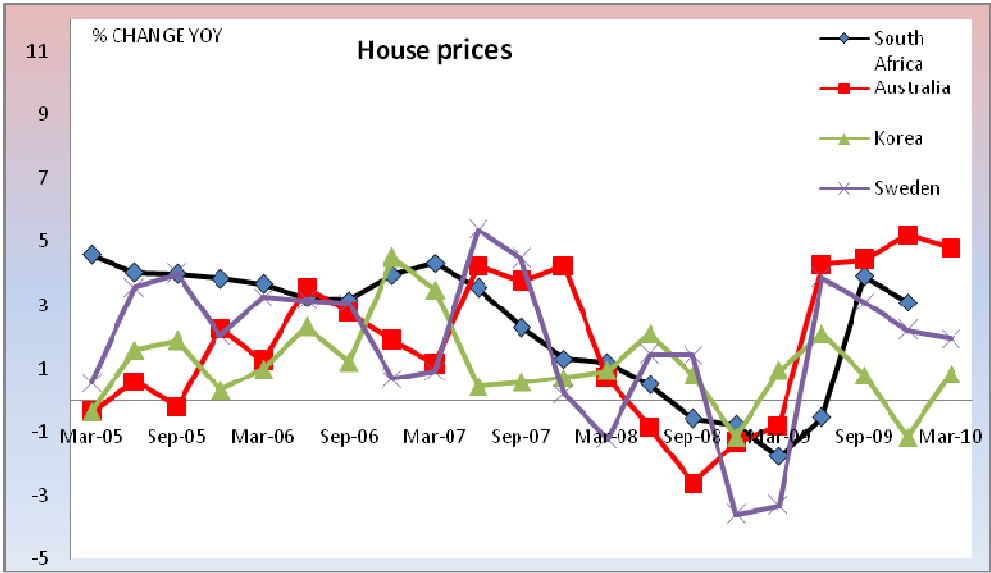
EXCHANGE RATES (PER 1 USD END OF THE MONTH)

	Mar-10	Apr-10	May-10	June-10	July-10	Aug-10	Sep-10
SA	7.34	7.25	7.55	7.51	7.43	7.31	6.98
Japan	101.35	93.18	92.47	91.44	86.57	86.47	84.23
Russia	29.33	29.15	30.51	31.16	30.41	30.60	30.56
Europe	1.35	1.35	1.24	1.23	1.29	1.33	1.35
Sweden	7.17	7.20	7.75	7.77	7.31	7.45	6.79
Brazil	1.80	1.76	1.80	1.79	1.78	1.77	1.71
India	45.50	44.29	45.21	46.19	46.95	46.77	45.02
Turkey	1.54	1.49	1.55	1.57	1.52	1.52	1.47
Hungary	194.75	197.78	224.33	227.33	222.99	220.32	202.50
Indonesia	9108.00	9032.00	9100.00	9150.00	9042.00	8949.00	8930.00
Australia	0.92	0.93	0.89	0.87	0.90	0.89	0.96
Korea	1108.85	1118.15	1130.93	1187.50	1199.15	1183.70	1146.60
China	6.83	6.82	6.83	6.81	6.78	6.80	6.69

FINANCIAL

	Aug-10	Sep-10
Russia	4.01	1.21
Europe	4.35	0.22
Sweden	2.51	3.02
India	1.72	10.81
Turkey	2.15	8.79
Hungary	4.30	-0.93
Australia	3.76	2.57
Korea	2.43	4.96
China	5.38	0.04





	Dec-09	Mar-10
Hong Kong	3.83	1.56
Portugal	-0.86	5.34
Colombia	0.84	-

Monetary and Fiscal Analysis

