

KWAZULU-NATAL PROVINCIAL TREASURY IGR UNIT

Tel: 033 897 4538



MONTHLY ECONOMIC NEWS LETTER June 2011

1. Around 90% of world trade is carried by the international shipping industry.
2. There are over 50,000 merchant ships trading internationally, transporting every kind of cargo. The world fleet is registered in over 150 nations, and manned by over a million seafarers of virtually every nationality.
3. **As of 31st October 2010, the world fleet was made up of 50,054 ships**

Figures in brackets are numbers of ships, by sector.

General Cargo Ships (16,224)

Bulk Carriers (8,687)

Container ships (4,831)

Tankers (13,175)

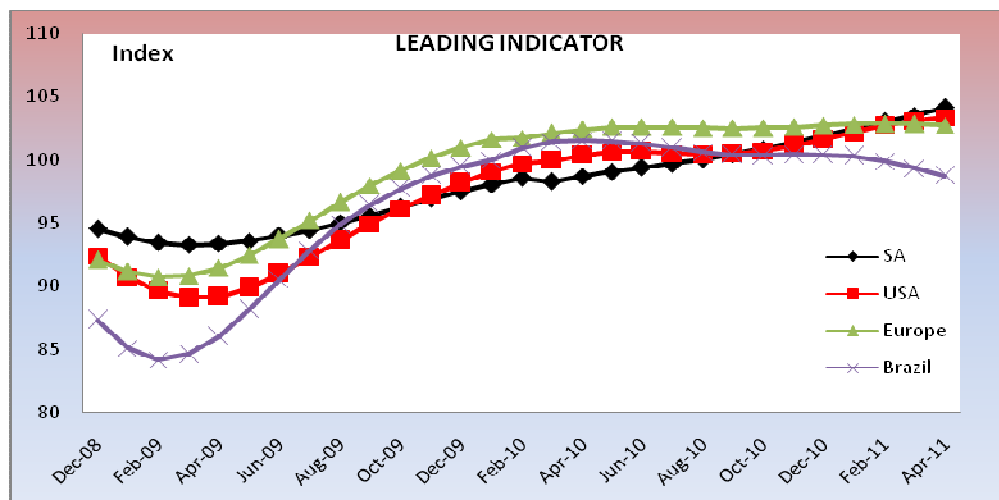
Passenger ships (6,597)

Over the last four decades total seaborne trade estimates have quadrupled, from just over 8 thousand billion tonne-miles in 1968 to over 32 thousand billion tonne-miles in 2008.

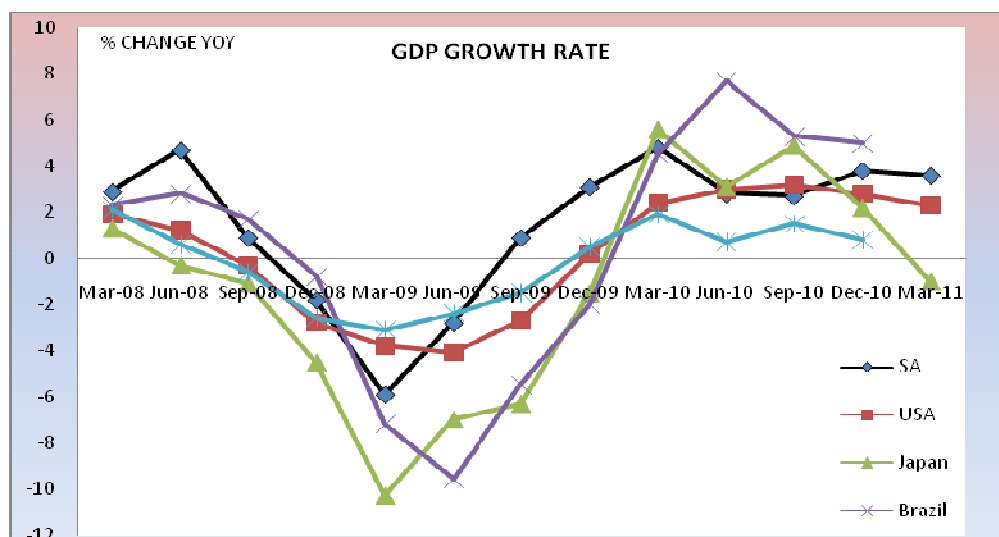
The world economy is exporting over a quarter of its merchandise output in 2008, up from 17% in 1980.

Source: Shipping Facts, <http://www.marisec.org/shippingfacts/home/>

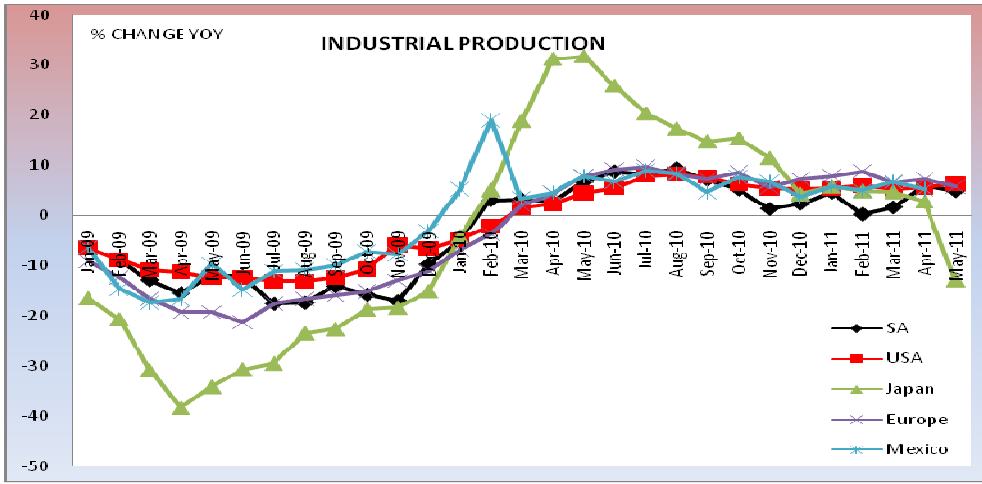
MACROECONOMIC INDICATORS



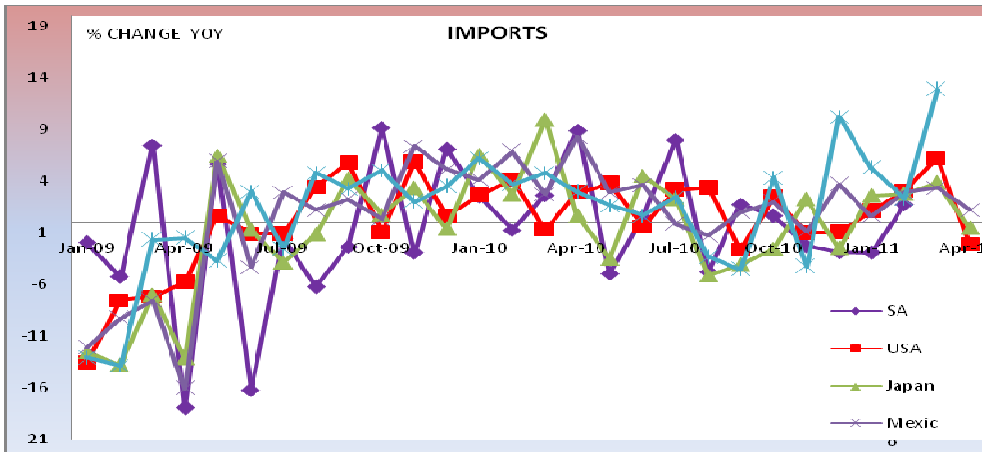
	Mar-11	Apr-11
Russia	104.78	104.64
Sweden	102.46	102.40
India	99.00	98.49
Turkey	103.03	102.72
Hungary	103.67	103.22
Indonesia	100.66	100.49
Australia	102.13	102.57
Korea	100.48	100.49
China	101.10	100.48



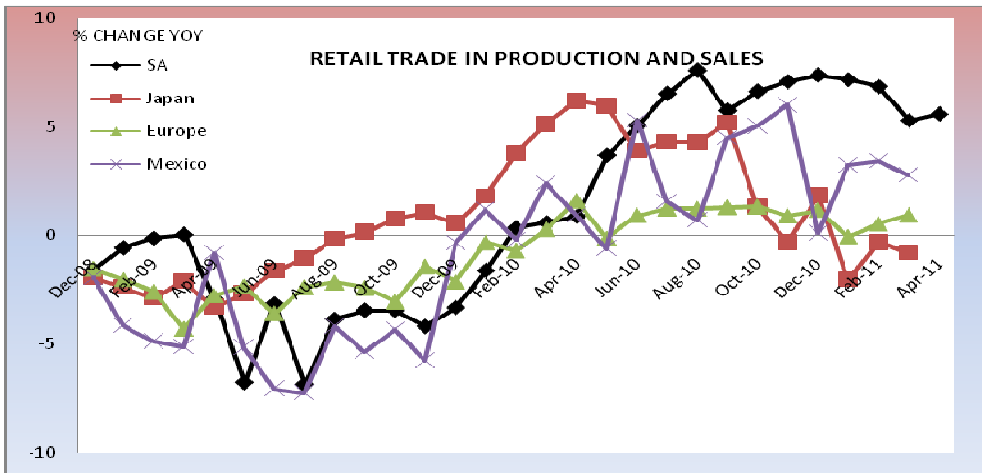
	Dec-10	Mar-11
Russia	4.50	4.10
Sweden	7.70	6.40
Brazil	5.00	4.20
India	8.30	7.80
Turkey	9.20	-
Hungary	1.90	2.40
Australia	3.00	1.20
Korea	4.70	4.20
China	9.80	9.70



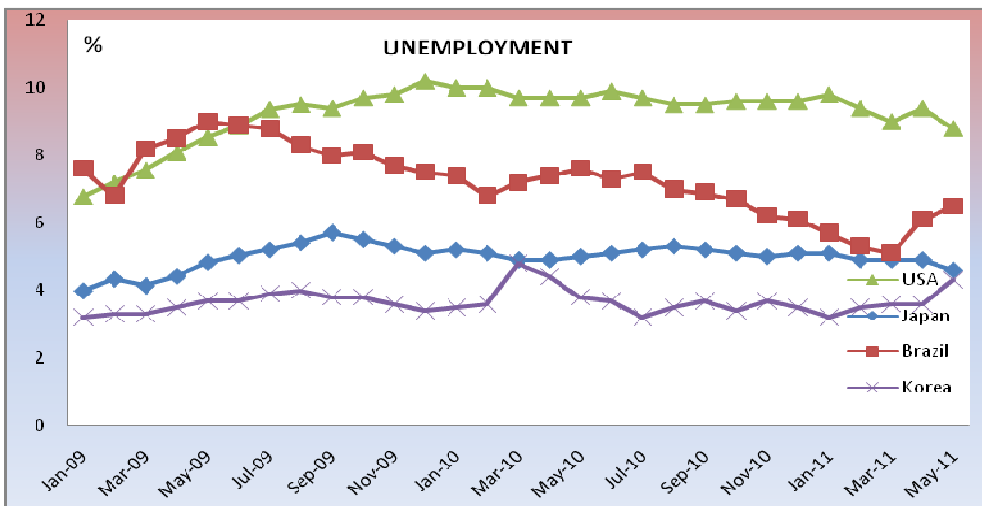
	Apr-11	May-11
Russia	4.50	4.10
Sweden	12.00	-
Chile	9.50	-
Poland	6.60	7.70
Hungary	7.10	7.10
New Zealand	-	-
Korea	6.90	-
China	13.40	13.30



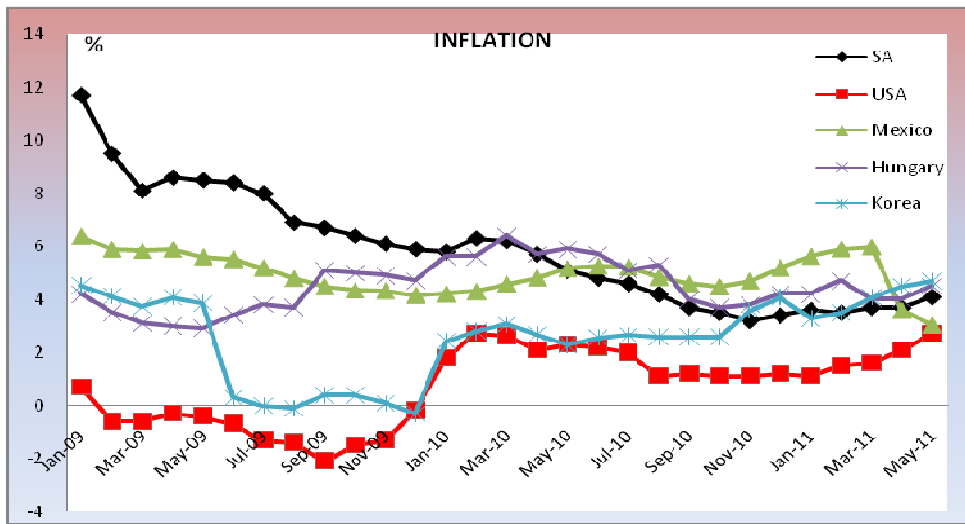
	Mar-11	Apr-11
Europe	-0.11	-
Sweden	0.45	2.72
Chile	-	-
Poland	-	-
Hungary	-0.81	-
New Zealand	-2.93	-8.06
Australia	-2.53	5.56



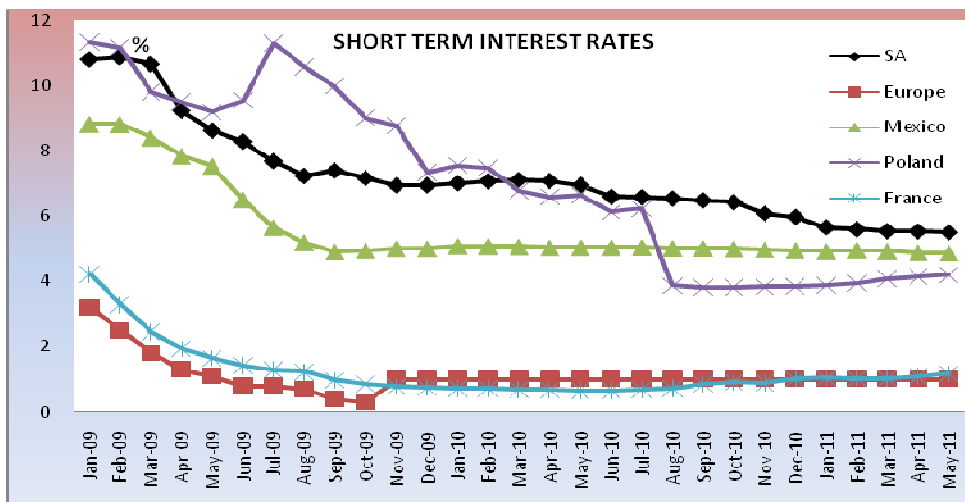
	Mar-11	Apr-11
USA	5.09	-
Mexico	0.50	-
Sweden	1.09	-
Hungary	-1.17	-
China	-	-
Russia	4.95	5.77
Korea	4.79	-



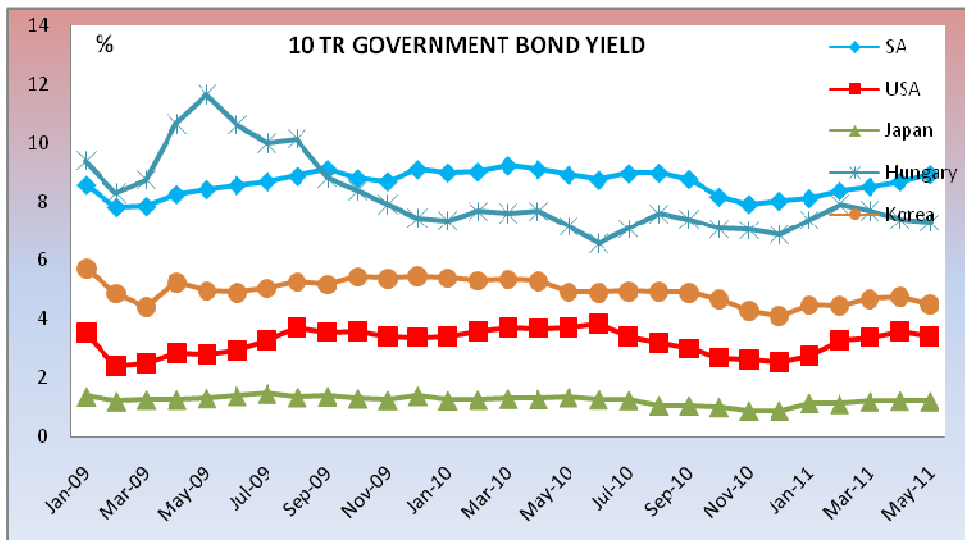
	Apr-11	May-11
Russia	7.20	6.40
Europe	9.90	-
Sweden	7.90	7.90
Japan	4.70	-
Australia	4.90	4.90
South Africa	24.00	25.00
USA	9.00	9.10
Korea	3.70	-



	Apr-11	May-11
Japan	0.30	-
Russia	9.60	9.60
Europe	2.80	2.70
Sweden	3.30	3.30
Chile	3.20	3.30
Poland	4.50	5.00
Hungary	4.70	3.90
Indonesia	6.16	5.98
France	2.10	2.00
China	5.30	-



	Apr-11	May-11
USA	3.46	3.17
Japan	1.22	-
Russia	-	-
Sweden	3.30	3.01
Chile	6.47	6.24
Poland	6.14	6.06
Indonesia	-	-
Korea	4.48	4.34
China	-	-

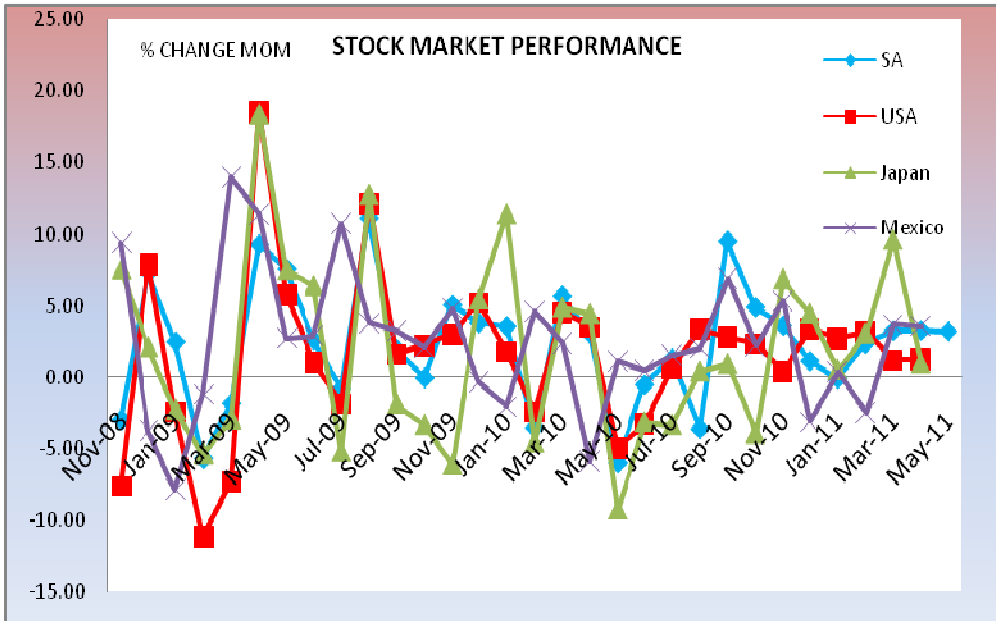


	Apr-11	May-11
Russia	-	-
Sweden	3.30	3.01
Mexico	4.93	4.84
Chile	6.47	6.24
Hungary	7.05	7.11
Australia	5.51	-

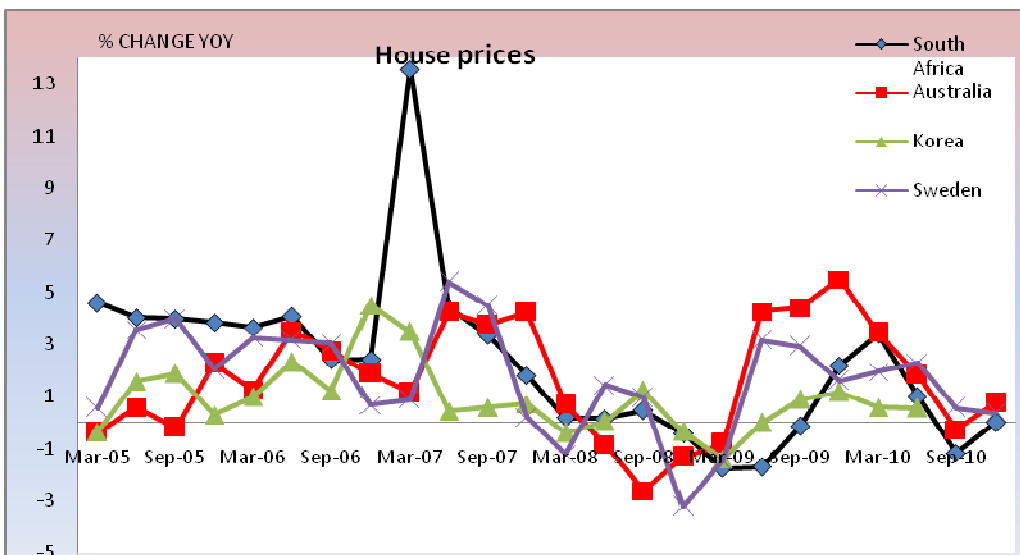
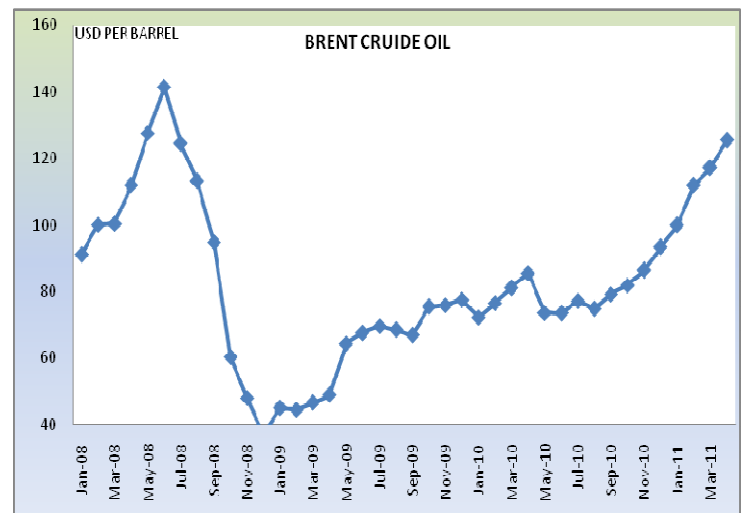
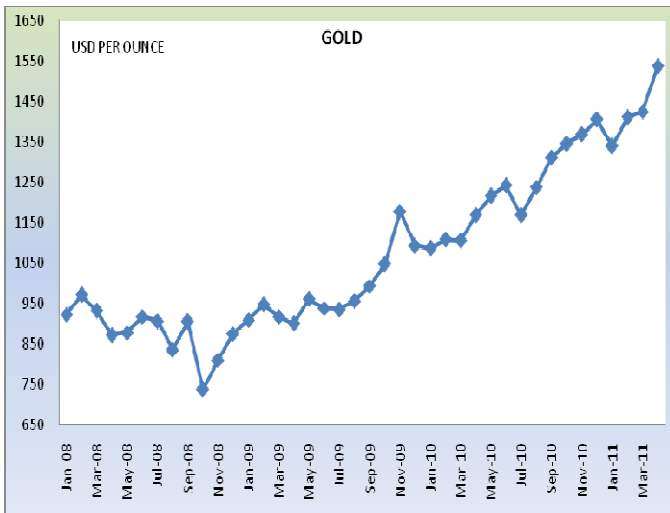
FINANCIAL INDICATORS

EXCHANGE RATES(PER 1 USD END OF THE MONTH)									
	Sep-10	Oct-10	Nov-10	Dec-10	Jan-11	Feb-11	Mar-11	Apr-11	May-11
SA	7.13	6.91	6.98	6.84	6.92	7.17	6.92	6.74	6.80
USA	1.00	1.00	1.00	1.00	1.00	1.00	1.00	1.00	1.00
Japan	84.37	81.80	82.55	83.27	82.58	82.54	81.66	83.17	80.83
Russia	30.84	30.32	30.97	30.85	30.08	29.29	28.43	28.10	27.92
Europe	0.76	0.72	0.73	0.76	0.75	0.73	0.71	0.69	0.70
Sweden	7.04	6.68	6.83	6.85	6.67	6.43	6.35	6.20	6.35
Mexico	12.80	12.44	12.33	12.39	12.12	12.07	12.00	11.70	11.65
Chile	493.41	484.61	482.59	473.52	490.21	474.82	479.32	469.71	467.89

Poland	3.01	2.84	2.90	3.02	2.91	2.87	2.86	2.74	2.75
Hungary	214.98	197.17	202.07	209.73	205.95	198.15	193.11	183.24	186.45
France	8930.00	8945.00	8992.50	8996.25	9030.50	8837.50	8652.50	-	-
Indonesia	8965.30	8928.50	8948.00	9016.30	9049.50	8894.00	8748.00	8574.00	-
Korea	1160.06	1121.50	1129.36	1145.14	1118.64	1117.66	1118.92	1083.03	1084.16
China	6.74	6.67	6.66	6.65	6.60	6.58	6.57	6.53	6.47

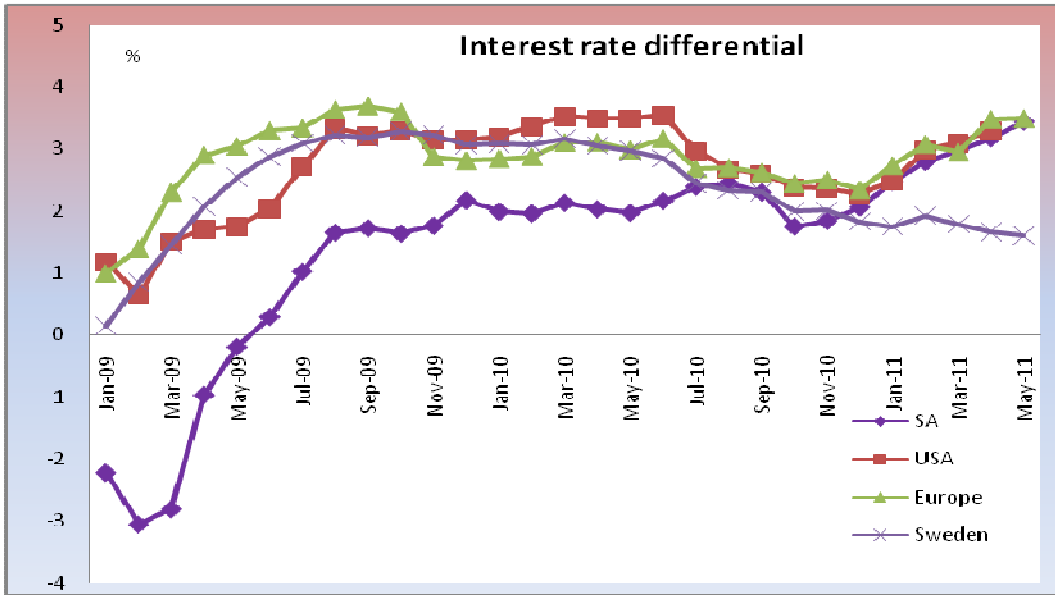


	Apr-11	May-11
Russia	0.16	0.16
Europe	0.28	0.29
Sweden	0.11	0.12
Chile	2.29	2.28
Poland	4.94	4.89
Hungary	2.31	2.26
Australia	0.47	0.47
Korea	0.21	0.21
China	0.27	0.29

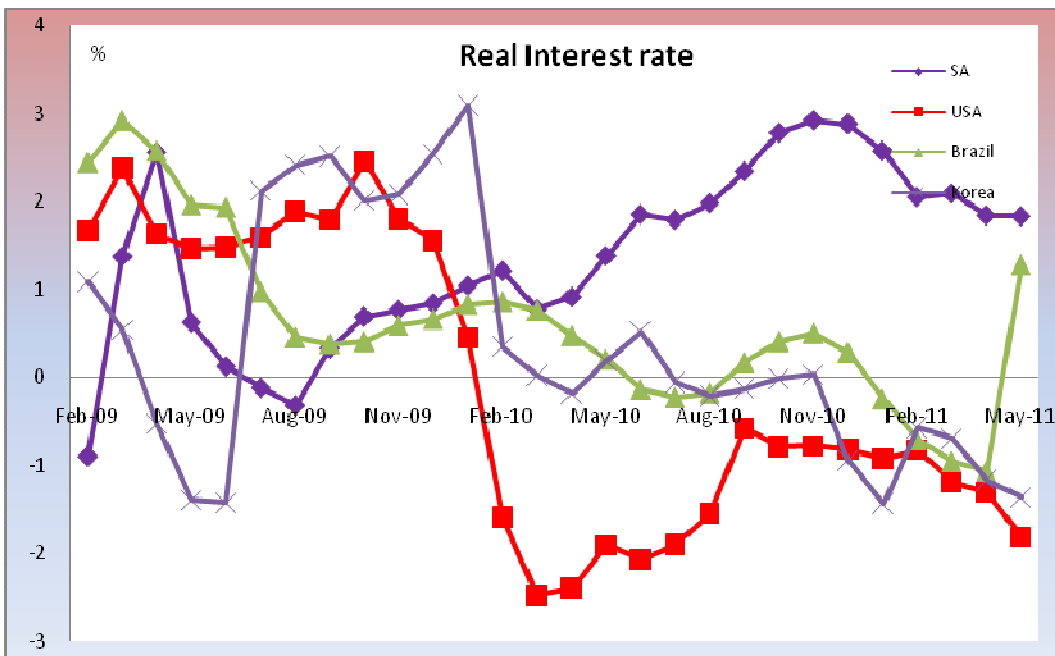


	Sep-10	Dec-10
Hong Kong	5.24	4.96
Portugal	-0.61	-0.26
Colombia	-	-

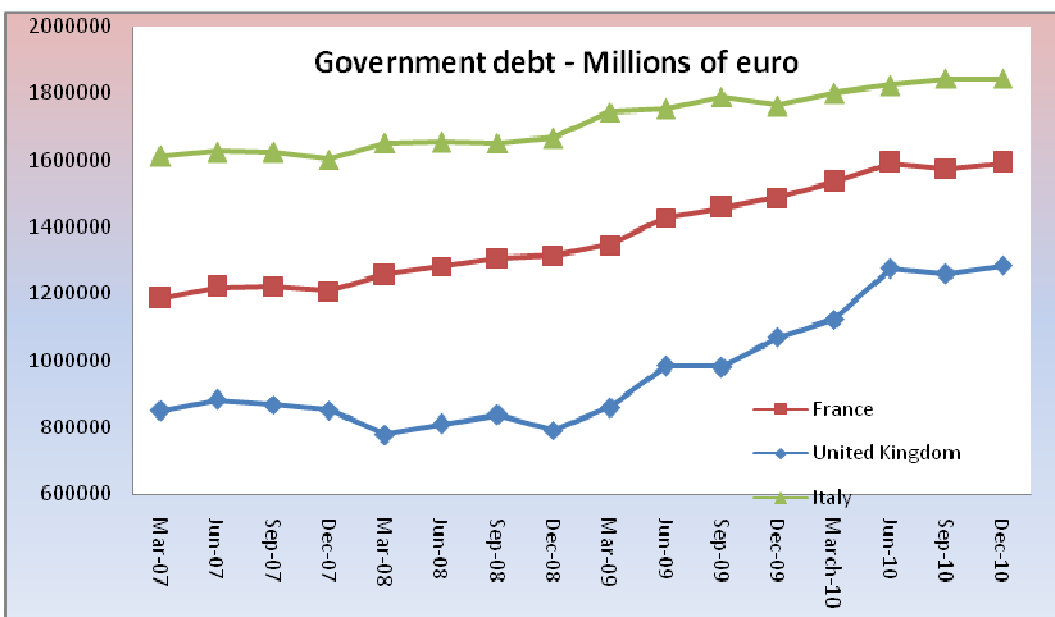
MONETARY AND FISCAL ANALYSIS



	Apr-11	May-11
Japan	0.88	-0.34
Mexico	0.05	-0.04
Chile	1.46	0.87
Poland	1.84	1.61
Hungary	0.97	0.23
New Zealand	4.38	-1.43
Korea	1.08	0.88
China	-4.30	-4.45



	Apr-11	May-11
Europe	-1.80	-2.70
Sweden	-1.50	-1.39
Chile	1.81	2.07
Poland	-0.20	-0.55
Hungary	1.38	2.98
Indonesia	0.79	-5.98
France	-0.78	-0.57
China	-1.00	-1.05



	Sep-10	Dec-10
Europe	1.00	-
Hungary	1.96	-0.72
France	-1.10	1.04
United Kingdom	-1.39	1.95
Slovenia	1.22	1.11
Portugal	14.58	2.87
Italy	1.10	-0.06
Sweden	2.87	7.38