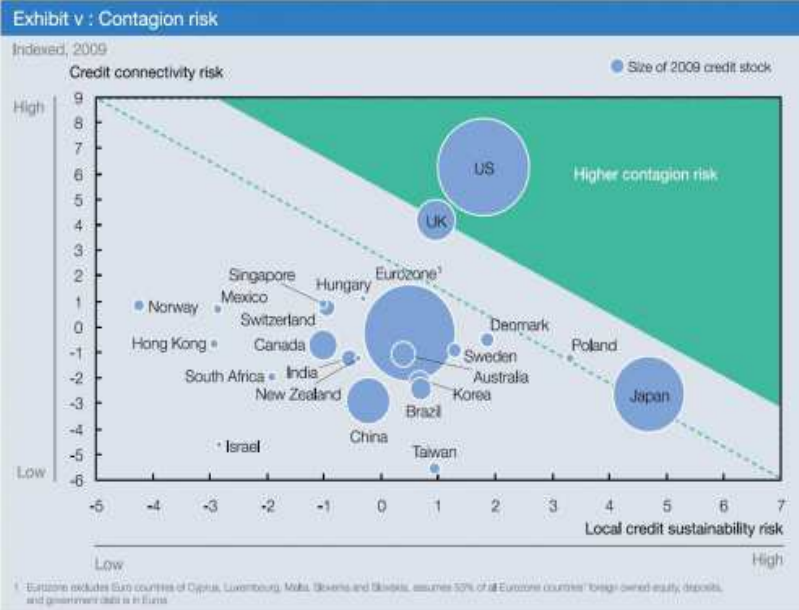


KWAZULU-NATAL PROVINCIAL TREASURY IGR UNIT

Tel: 033 897 4249

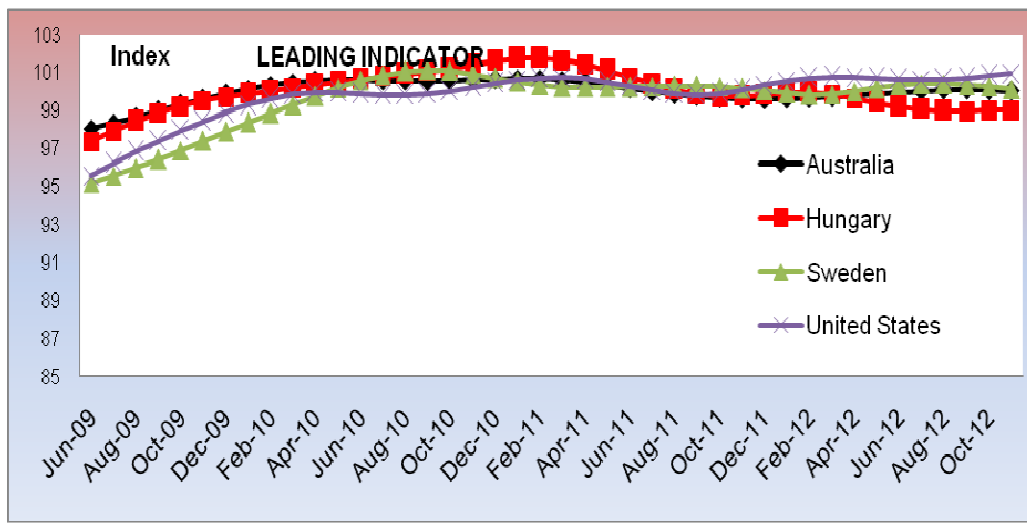


MONTHLY ECONOMIC NEWS LETTER DEC 2012

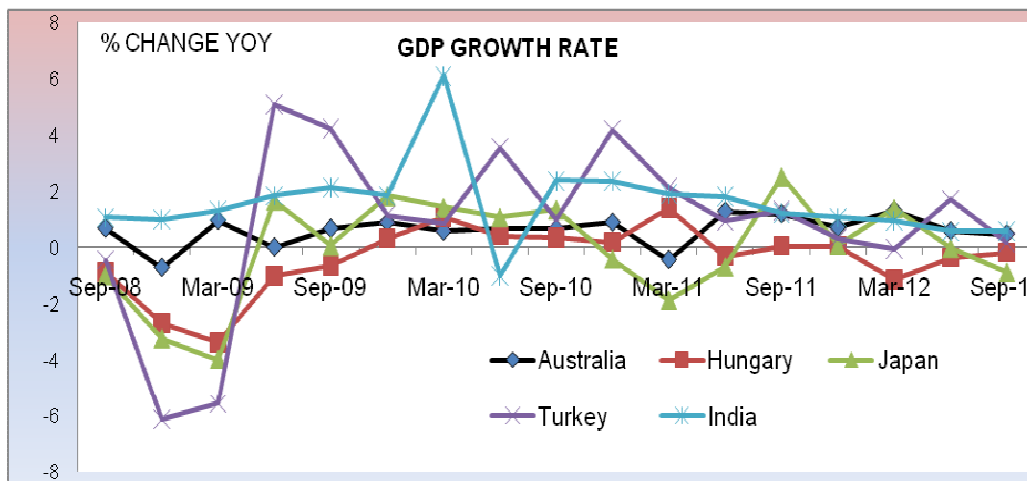


World Economic Forum

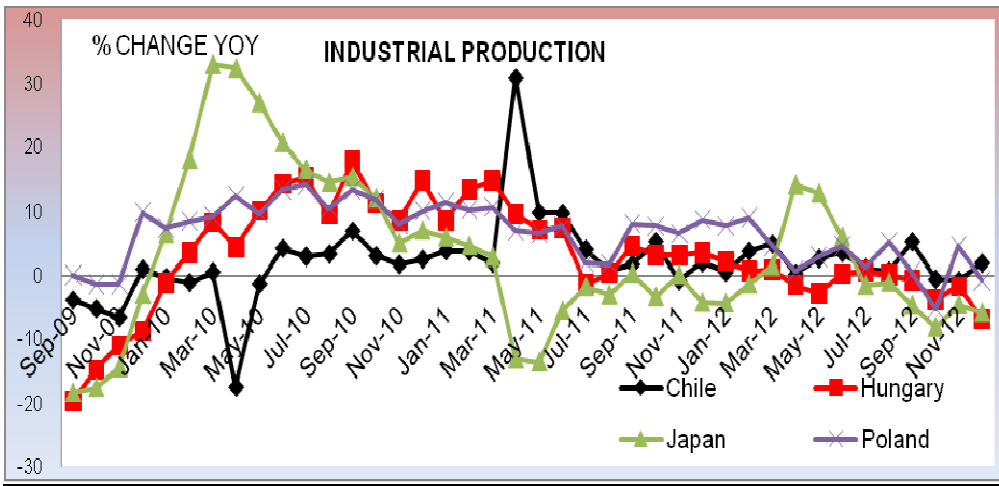
MACROECONOMIC INDICATORS



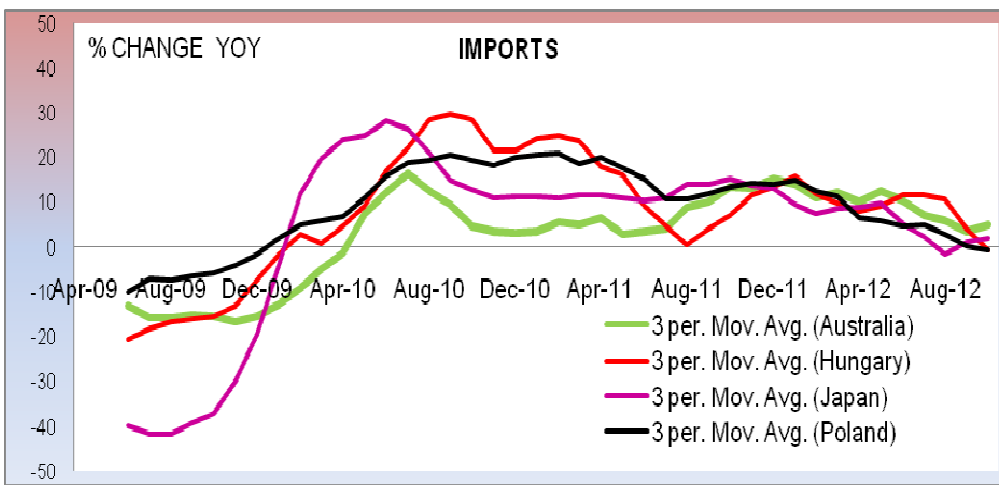
	Oct-12	Nov-12
Russia	98.83	98.61
Sweden	100.25	100.13
India	97.75	97.88
Turkey	99.38	99.29
Hungary	99.01	99.01
Indonesia	99.35	99.45
Australia	100.06	100.01
Korea	100.53	100.71
China	99.53	99.74



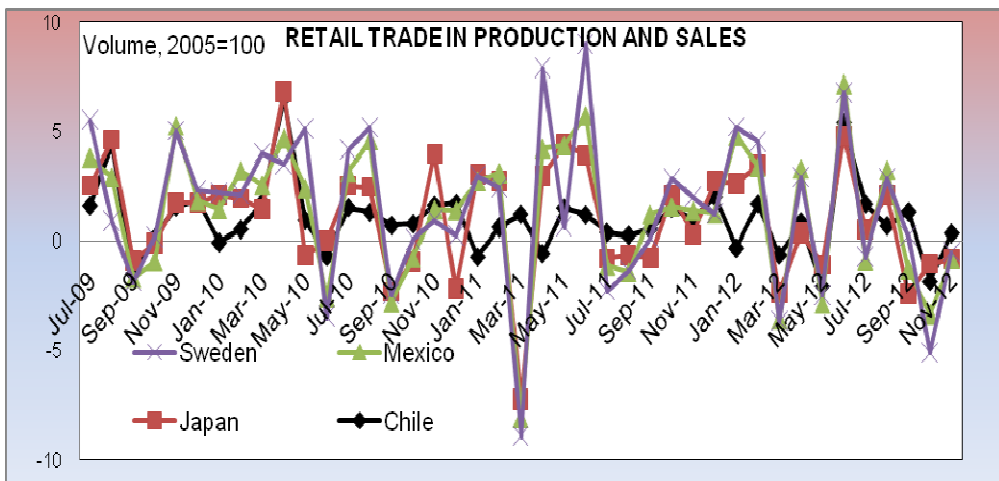
	Jun-12	Sep-12
Russia	0.40	0.83
Sweden	0.75	0.50
Brazil	0.24	0.59
India	0.58	0.59
Turkey	1.69	0.17
Hungary	-0.36	-0.17
Australia	0.58	0.47
Korea	0.28	0.06



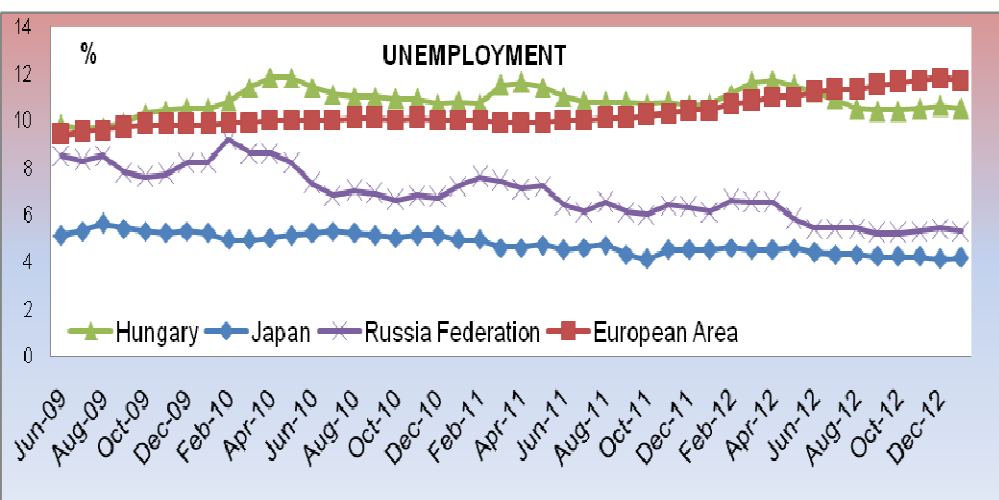
	Nov-12	Dec-12
Russia	1.80	1.90
Europe	-3.30	-3.70
Sweden	-4.40	-4.30
Chile	-0.80	1.90
Poland	4.60	-0.80
Hungary	-1.70	-6.90
Korea	-0.80	-2.90



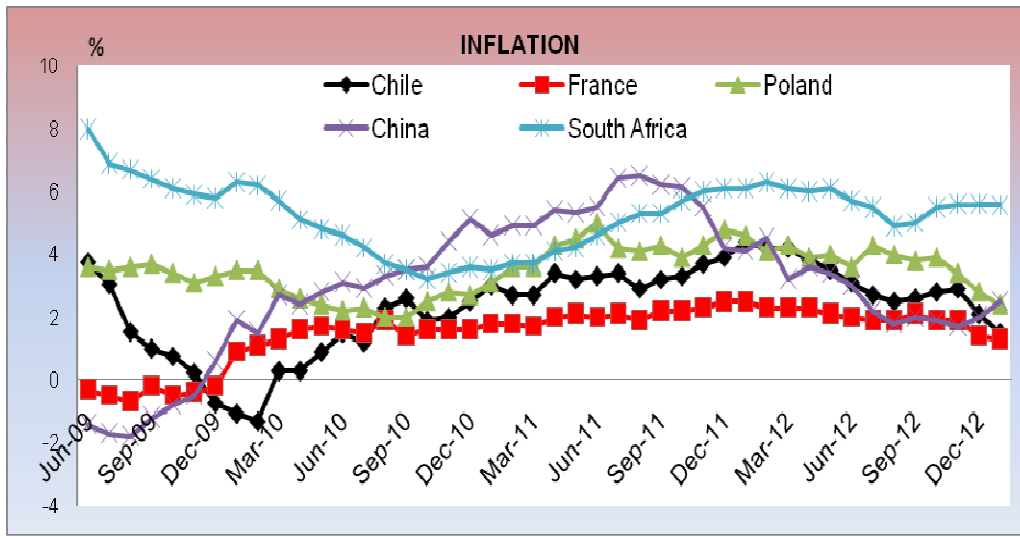
	Sep-12	Oct-12
Europe	0.94	2.17
Sweden	-6.90	-6.90
Chile	7.62	7.62
Poland	-2.15	0.15
Hungary	-3.53	-3.42
New Zealand	4.28	-7.56
Australia	4.81	3.42



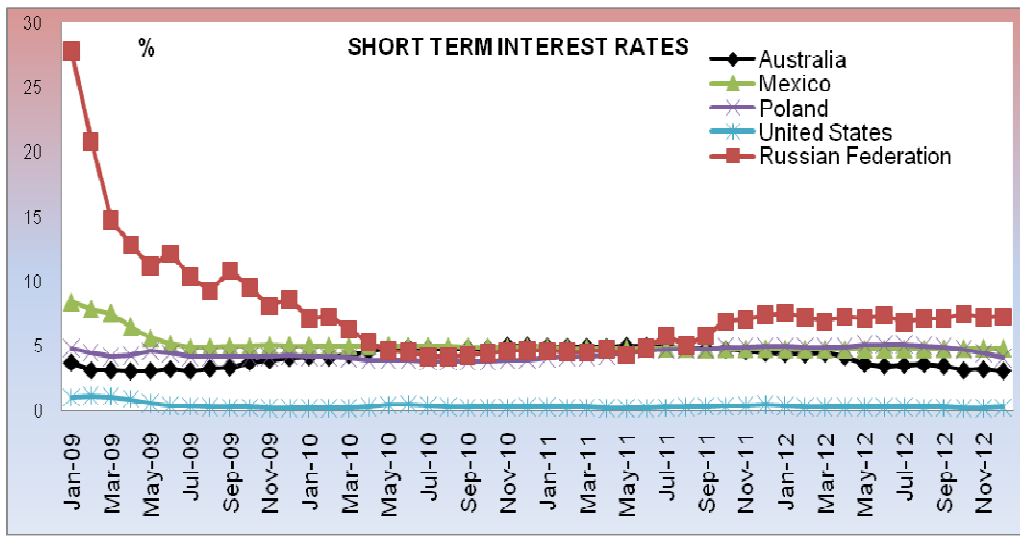
	Oct-12	Nov-12
USA	-0.54	0.60
Europe	-0.70	0.10
Mexico	-2.32	-0.01
Sweden	-1.74	0.32
Hungary	-0.44	-0.33
Russia	0.09	0.66
Korea	-0.85	2.26



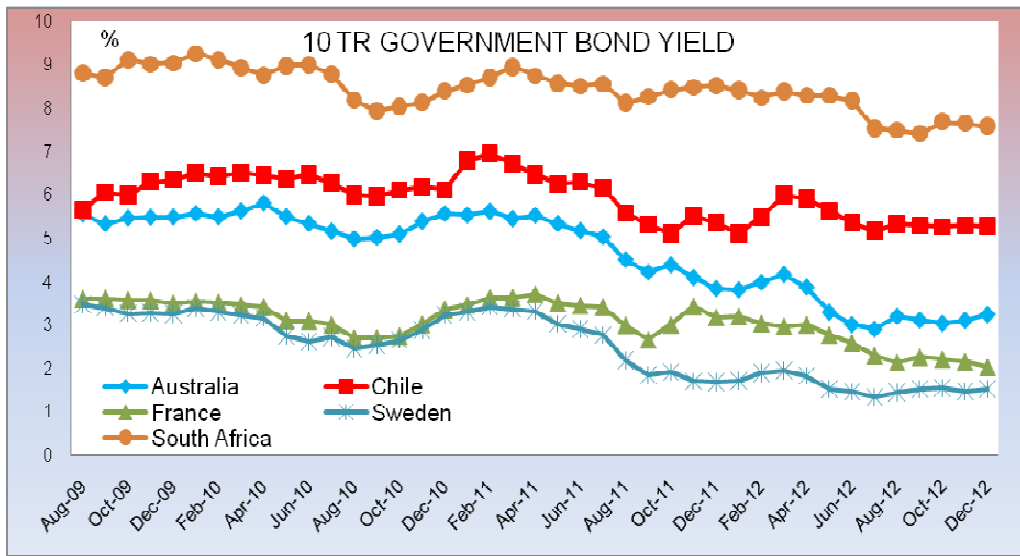
	Dec-12	Jan-12
Russia	5.40	5.30
Europe	11.80	11.70
Sweden	7.50	7.33
Japan	4.10	4.17
Australia	5.30	5.40
South Africa	25.50	25.50
USA	7.80	7.80
Korea	2.80	2.83



	Dec-12	Jan-12
Japan	-0.20	-0.30
Russia	6.50	6.60
Europe	2.20	2.20
Sweden	-0.10	-0.10
Chile	2.10	1.50
Poland	2.80	2.40
Hungary	5.20	5.00
Indonesia	4.32	4.30
France	1.40	1.30
China	2.00	2.50



	Nov-12	Dec-12
USA	0.23	0.24
Japan	0.32	0.32
Russia	7.28	7.32
Sweden	1.06	1.01
Chile	5.05	5.02
Poland	4.49	4.11
Korea	2.85	2.88
China	3.81	3.88



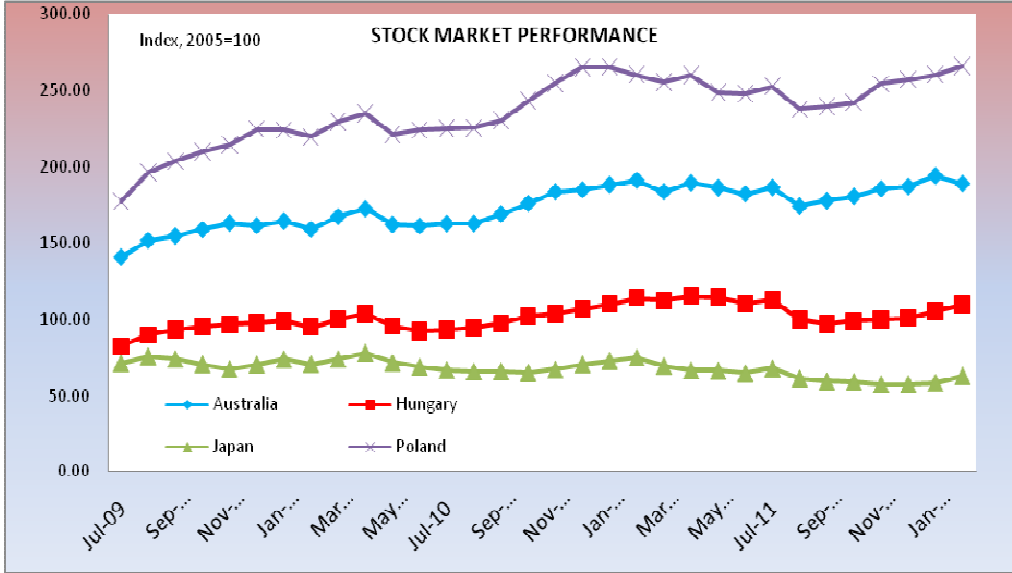
	Nov-12	Dec-12
Russia	7.96	8.14
Sweden	1.46	1.51
Mexico	5.52	0.00
Chile	5.28	5.27
Hungary	6.87	6.44
Australia	3.09	3.23

NB: Figures in red are estimates, calculated using a 3 month moving average

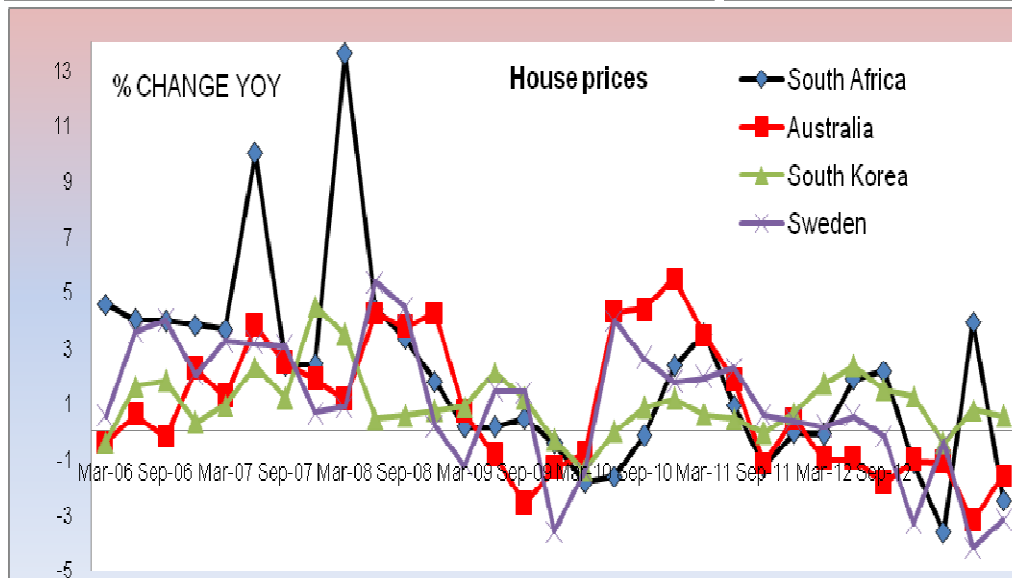
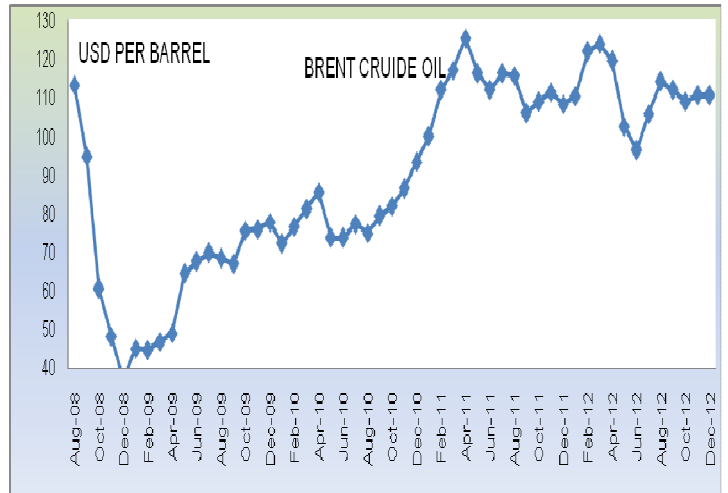
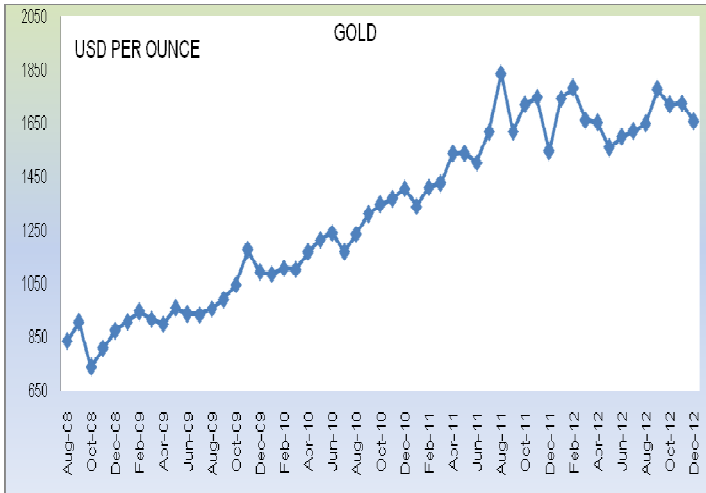
FINANCIAL INDICATORS

EXCHANGE RATES (PER 1 USD END OF THE MONTH)										
	Mar-12	Apr-12	May-12	Jun-12	Jul-12	Aug-12	Sep-12	Oct-12	Nov-12	Dec-12
Chile	501.34	481.49	485.40	482.88	483.05	475.75	480.75	479.50	479.50	479.20
Hungary	237.80	219.27	221.13	227.48	228.95	224.25	225.76	218.62	218.62	220.86
Japan	76.92	78.55	82.44	78.16	78.14	78.23	78.38	79.68	79.68	86.75
Korea	1141.63	1122.45	1126.18	1138.05	1130.48	1130.50	1134.75	1090.30	1090.30	1064.40

Mexico	13.40	12.78	12.74	13.27	13.33	13.01	13.20	13.06	13.06	12.85
Poland	3.39	3.16	3.13	3.36	3.34	3.20	3.31	3.18	3.18	3.09
Sweden	6.85	6.66	6.73	6.79	6.80	6.60	6.62	6.64	6.64	6.50
Euro area (17 countries)	0.78	0.76	0.76	1.23	1.23	1.28	1.29	1.30	1.30	1.32
China	6.32	6.30	6.31	6.38	6.36	6.35	6.35	6.24	6.24	6.23
Indonesia	9073.80	9048.00	9184.00	9478.00	9445.00	9565.00	9535.00	9586.30	9586.30	9793.00
Russian Federation	31.51	29.88	29.40	32.18	32.20	31.81	32.29	31.34	31.34	30.56
South Africa	8.01	7.66	7.61	8.19	8.27	8.21	8.40	8.63	8.63	8.47
USA	1.00	1.00	1.00	1.00	1.00	1.00	1.00	1.00	1.00	1.00

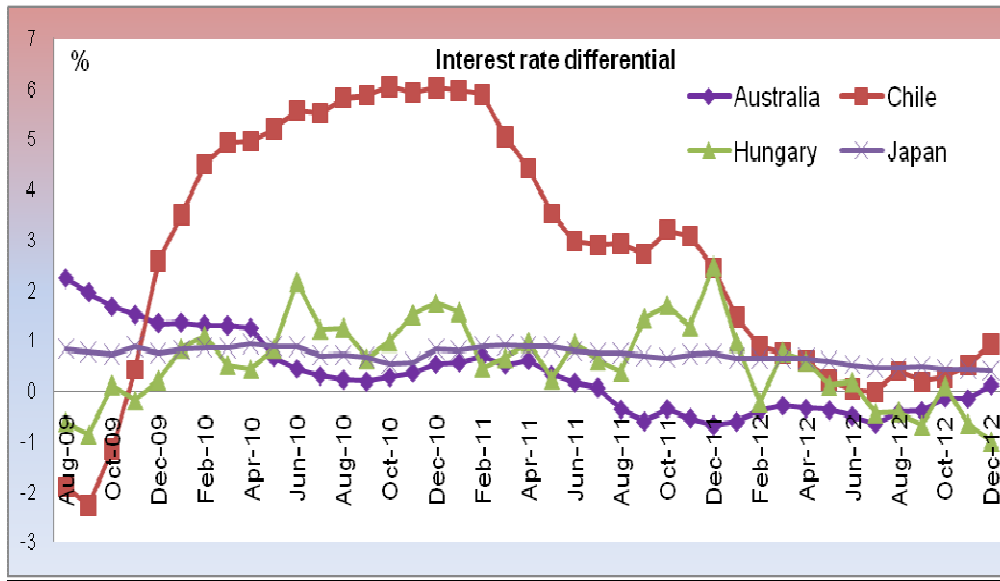


	Jan-12	Feb-12
Russia	206.98	219.15
Europe	79.50	84.20
Sweden	123.47	131.53
Chile	215.26	224.38
Poland	131.57	141.08
Hungary	93.60	101.58
Australia	97.29	98.92
Korea	176.96	186.98
China	195.31	204.35

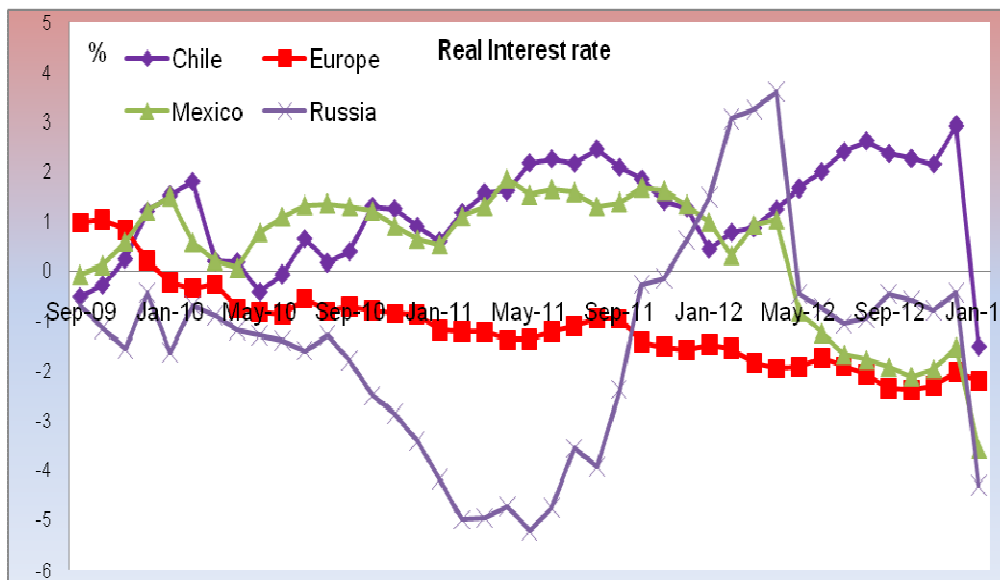


	Jun-12	Sep-12
Hong Kong	3.01	10.76
Portugal	10.95	-9.70
Colombia	2.37	2.35

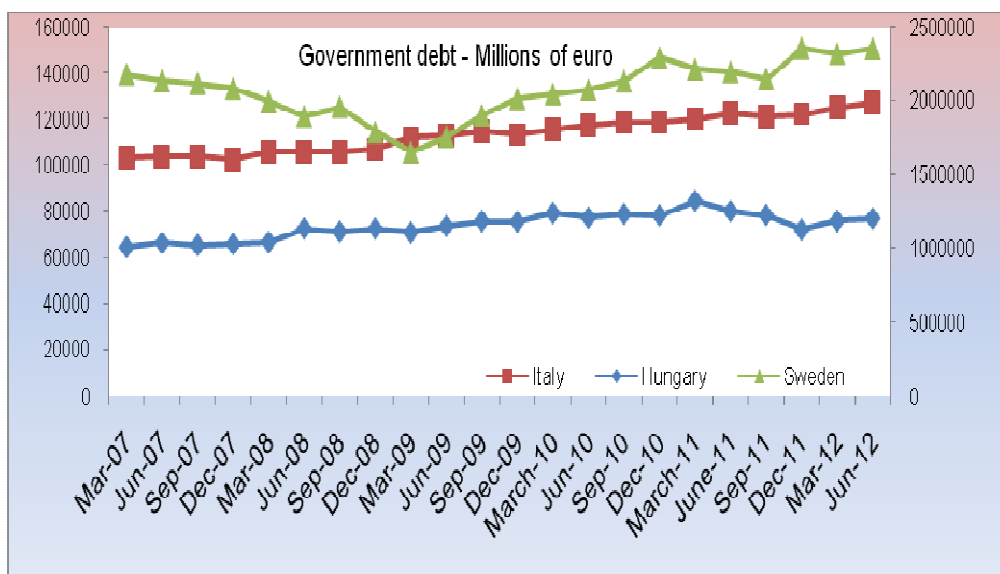
MONETARY AND FISCAL ANALYSIS



	Nov-12	Dec-12
Japan	0.39	0.42
Mexico	0.66	-4.86
Chile	0.24	0.25
Poland	-0.31	-0.23
Hungary	-0.66	-1.00
Australia	-0.16	0.12
New Zealand	0.83	0.91
Korea	0.14	0.25



	Dec-12	Jan-13
Europe	-2.01	-2.20
Sweden	1.11	0.10
Chile	2.92	-1.50
Poland	1.31	-2.40
Hungary	-4.88	-5.00
France	6.04	-1.30
China	-1.81	-2.50



	Mar-11	Jun-12
European Union (27 countries)	10,600,837	10,840,198
France	1,789,387	1,832,599
Italy	1,954,490	1,982,239
Hungary	75,938	77,035
Portugal	190,397	198,136
Slovenia	17,030	17,334
Sweden	148,407	150,699
United Kingdom	1,573,494	1,633,932