

STATS SA FACT AND FIGURES - DECEMBER 2015

Table 3.1: Distribution of all recipients of temporary residence permits by type of permit, 2014

Type Permit	Total	Percentage
Visitors	21 350	30,8
Work	18 184	26,3
Relatives	14 918	21,6
Study	11 208	16,2
Business	2 003	2,9
Waiver	811	1,2
Retired persons	504	0,7
Medical	159	0,2
Treaty	43	0,1
Exchange	36	0,1
Grand Total	69 216	100,0

Figure 3.1: Distribution of recipients of temporary residence permits from the ten leading countries from all regions, 2014

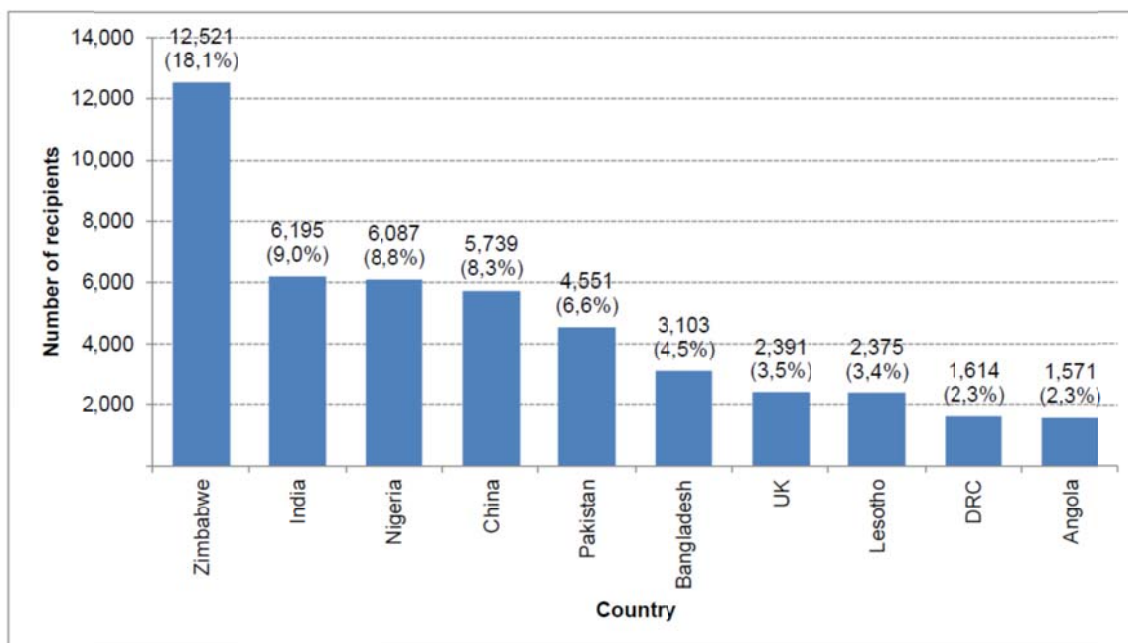


Figure 3.2: Distribution of recipients of temporary residence permits from the ten leading countries from the overseas region, 2014

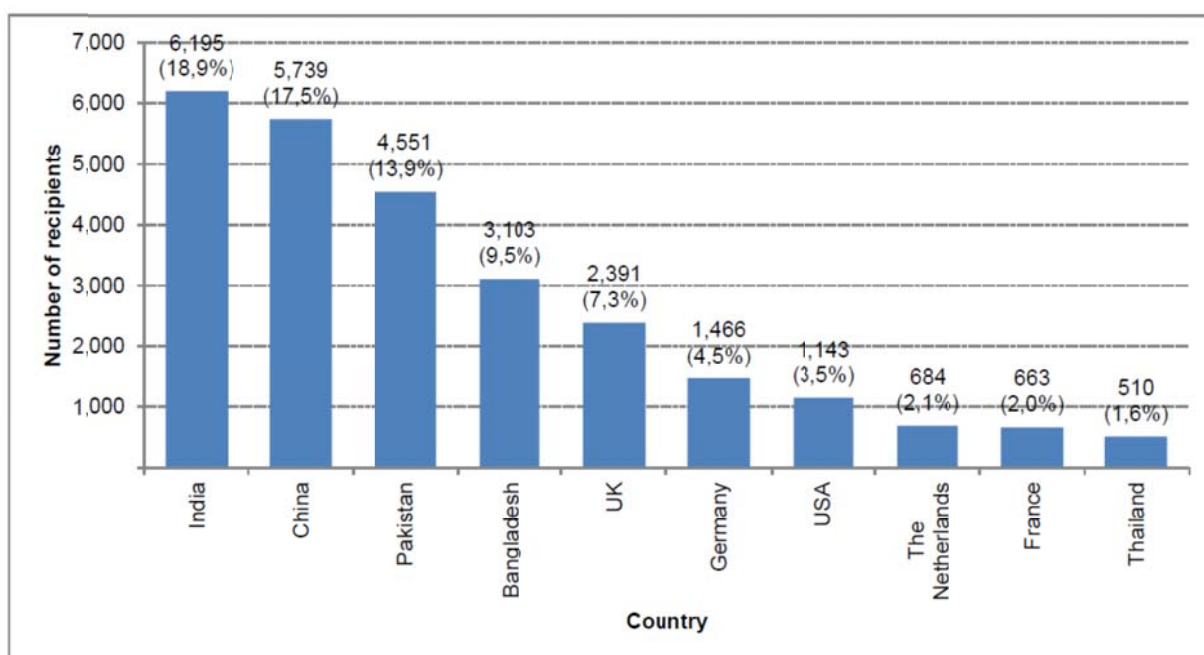


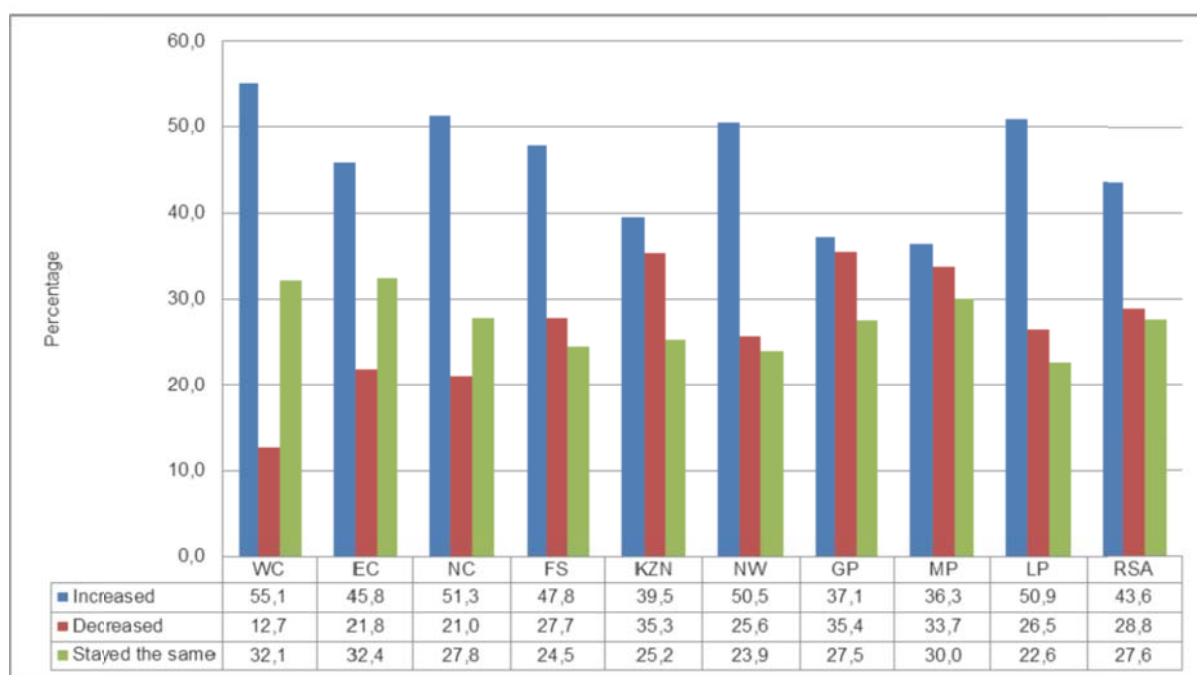
Table 1: Summary table of key findings – Most recent trips

Key metrics		2015	
		Quarter 1	Quarter 2
Travel indicators			
Travel incidence			
Most recent trips by quarter	Day trips	4 681	4 616
	Overnight trips	6 862	6 943
Main destination	Day trips	Gauteng: 23,1% Limpopo: 17,1% Western Cape: 13,8%	Gauteng: 23,5% Limpopo: 18,2% Western Cape: 11,2%
	Overnight trips	Eastern Cape: 15,4% KwaZulu-Natal: 14,7% Limpopo: 14,1%	Limpopo: 17,3% KwaZulu-Natal: 15,6% Eastern Cape: 15,1%

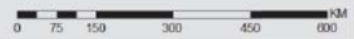
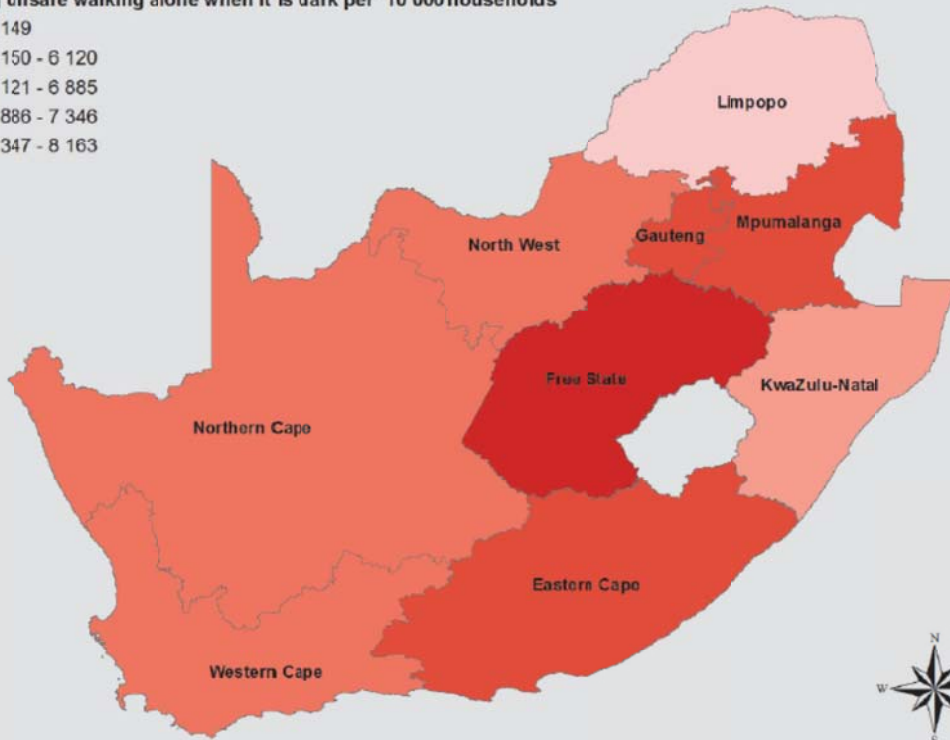
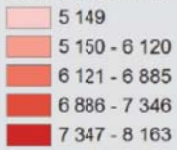
Table 4a: Province of destination by most recent day trips, January–June, 2015

Period	Main destination - Day trip										
	WC	EC	NC	FS	KZN	NW	GP	MP	LP	Un-specified	Total
Quarter 1											
Number	645	391	199	166	544	345	1 080	392	803	118	4 681
Per cent	13,8	8,3	4,2	3,5	11,6	7,4	23,1	8,4	17,1	2,5	100,0
Quarter 2											
Number	516	386	176	212	472	331	1 083	442	839	160	4 616
Per cent	11,2	8,4	3,8	4,6	10,2	7,2	23,5	9,6	18,2	3,5	100,0

Figure 2: Percentage distribution of households' perceptions about violent crime levels in their area of residence in the three years prior to the survey, by province, 2011–2014/15



Feeling unsafe walking alone when it is dark per 10 000 households



Reporting of house breaking/burglary per 10 000 households

