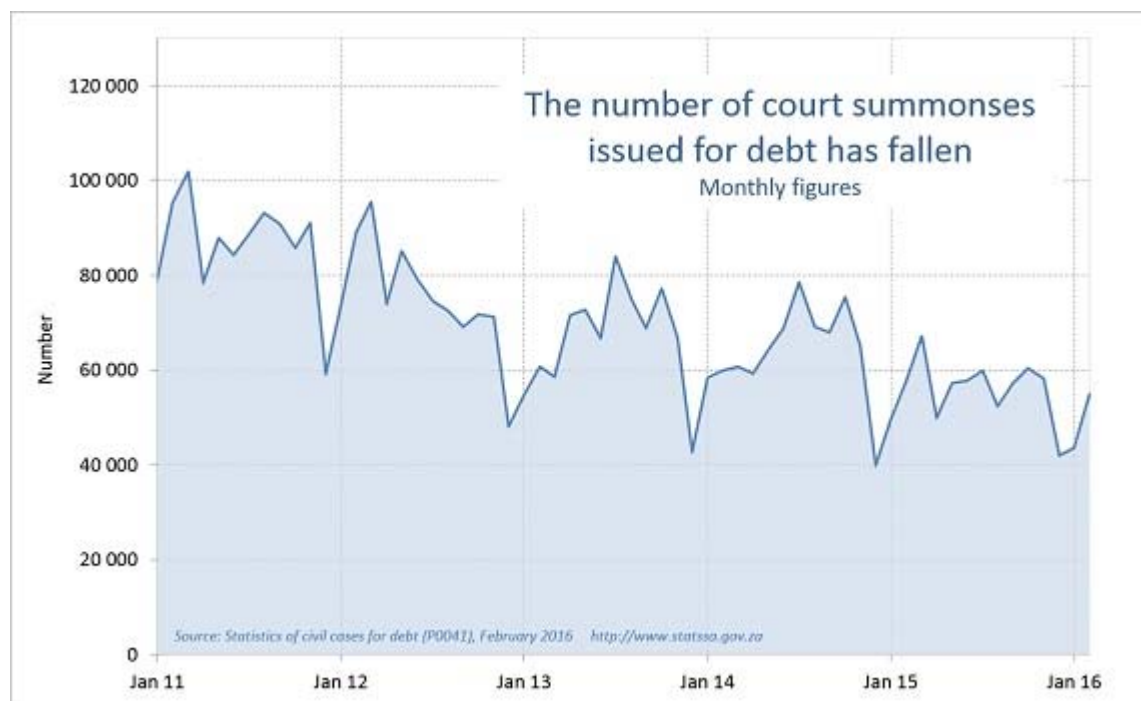
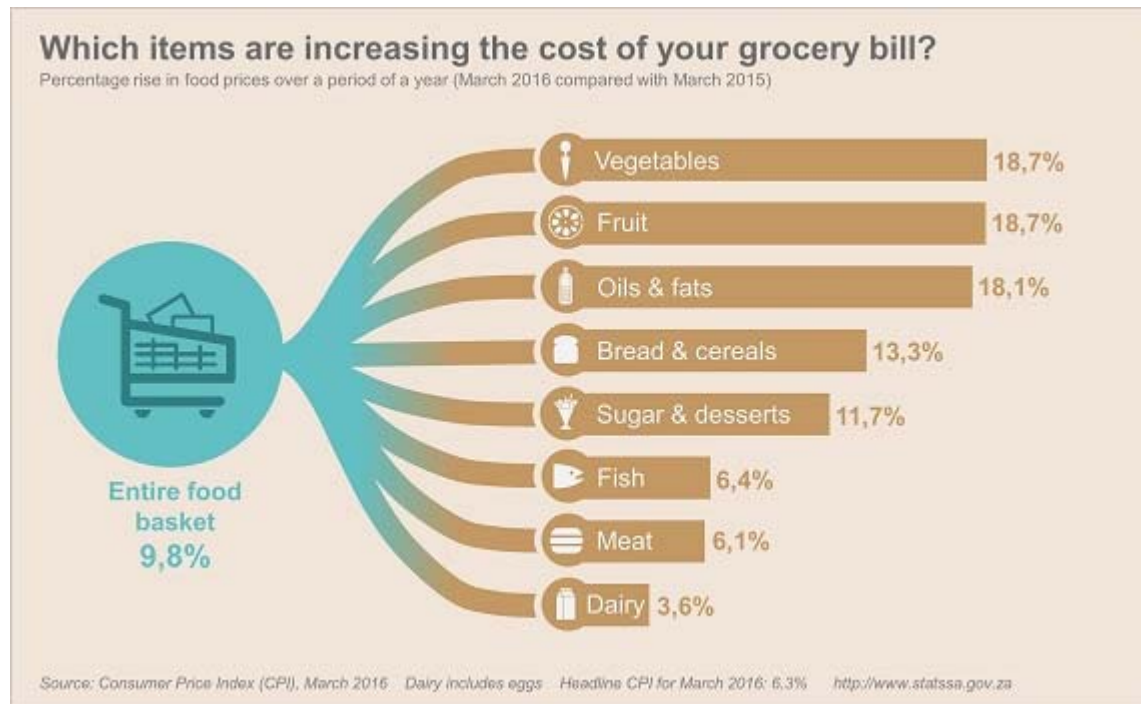
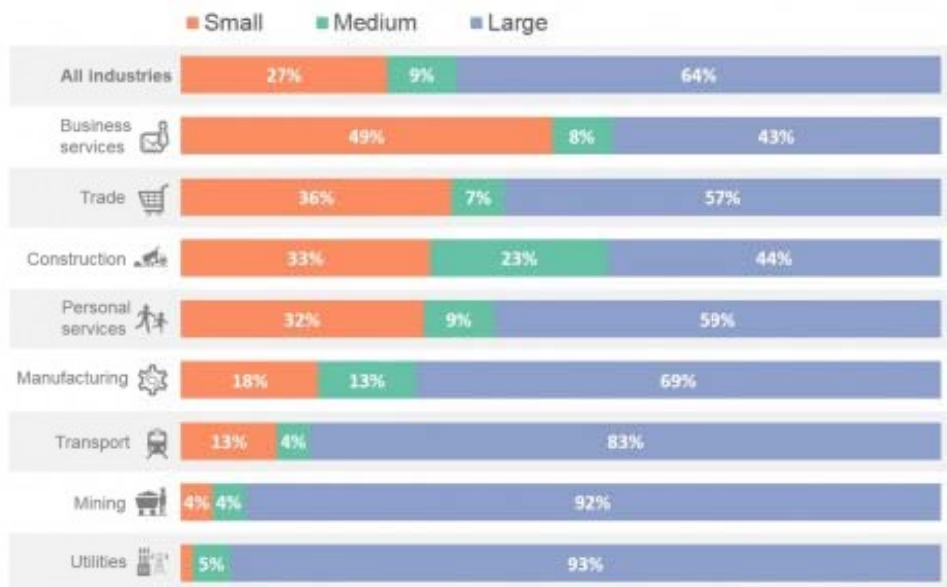


STATS SA FACT AND FIGURES – APRIL 2016



Where are small businesses making a contribution?

Percentage of turnover in each industry by business size. For the private sector, December 2015 quarter



Different turnover cut-off points are used in each industry to classify small, medium and large enterprises.
Source: Quarterly financial statistics (P0044), December 2015 <http://www.stats.gov.za>

Figure 1 – Number of tourists from the ten leading overseas countries in February 2015 and February 2016

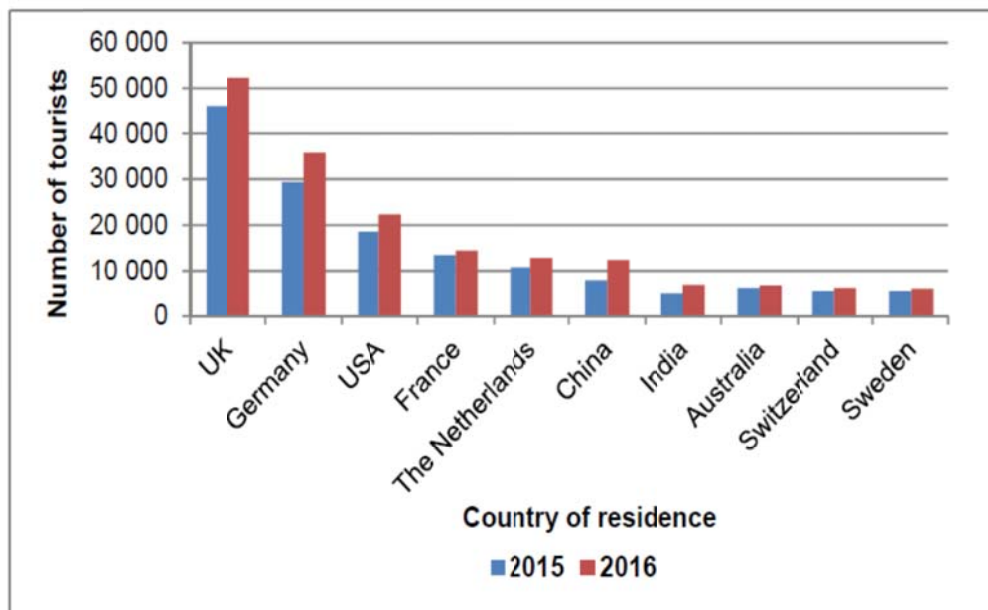


Table 1.2 – Liquidations of close corporations according to industry (number)

Industry	January – February 2016			February 2015			January 2016			February 2016		
	C	V	Total	C	V	Total	C	V	Total	C	V	Total
1.Agriculture, hunting, forestry and fishing	1	1	2	0	0	0	0	1	1	1	0	1
2.Mining and quarrying	0	0	0	0	0	0	0	0	0	0	0	0
3.Manufacturing	1	11	12	0	6	6	1	5	6	0	6	6
4.Electricity, gas and water	0	2	2	0	1	1	0	1	1	0	1	1
5.Construction	0	16	16	1	7	8	0	10	10	0	6	6
6. Trade, catering and accommodation	3	42	45	3	24	27	1	17	18	2	25	27
7.Transport, storage, communication	0	4	4	0	5	5	0	1	1	0	3	3
8.Financing and business services	5	52	57	2	24	26	5	16	21	0	36	36
9.Community, social, personal services	1	14	15	0	5	5	0	5	5	1	9	10
10.Unclassified	0	9	9	0	0	0	0	6	6	0	3	3
Total number of liquidations	11	151	162	6	72	78	7	62	69	4	89	93

C = Compulsory.

V = Voluntary.

Table 1.1 – Liquidations of companies according to industry (number)

Industry	January – February 2016			February 2015			January 2016			February 2016		
	C	V	Total	C	V	Total	C	V	Total	C	V	Total
1.Agriculture, hunting, forestry and fishing	0	7	7	0	0	0	0	6	6	0	1	1
2.Mining and quarrying	0	0	0	0	2	2	0	0	0	0	0	0
3.Manufacturing	1	2	3	0	2	2	0	1	1	1	1	2
4.Electricity, gas and water	0	1	1	0	0	0	0	0	0	0	1	1
5.Construction	0	3	3	1	4	5	0	0	0	0	3	3
6.Trade, catering and accommodation	3	17	20	3	12	15	2	6	8	1	11	12
7.Transport, storage, communication	1	1	2	0	2	2	1	1	2	0	0	0
8.Financing and business services	9	74	83	8	26	34	6	32	38	3	42	45
9.Community, social, personal services	4	18	22	4	16	20	0	1	1	4	17	21
10.Unclassified	0	25	25	0	0	0	0	10	10	0	15	15
Total number of liquidations	18	148	166	16	64	80	9	57	66	9	91	100

Figure 1.2 - Contributions to the annual percentage change in PPI for final manufactured goods

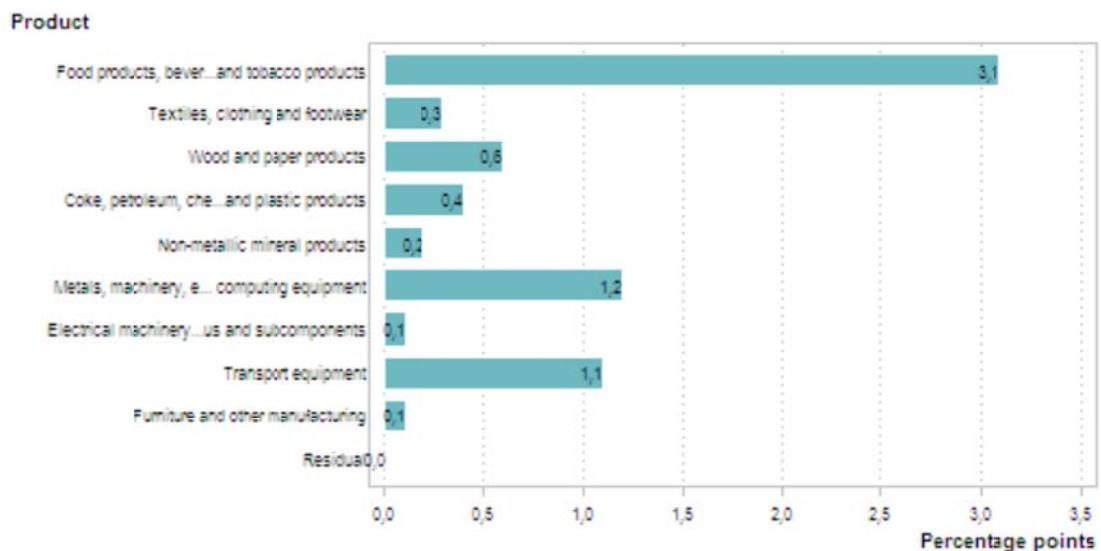
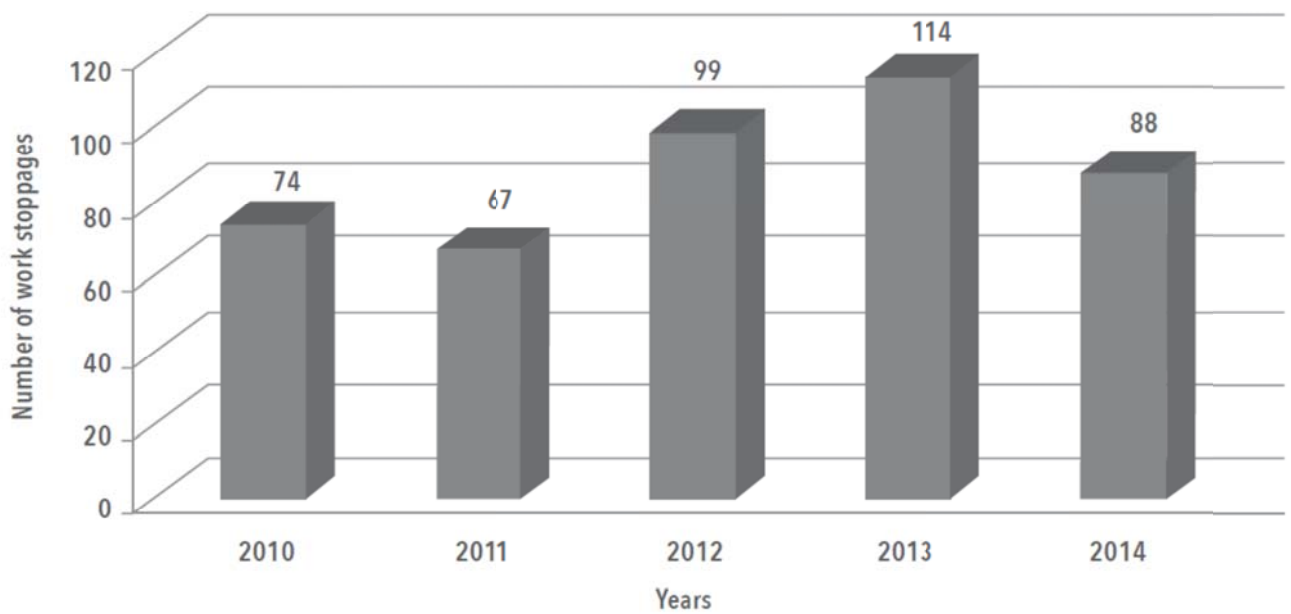


Table 22 - Contributions of the different groups to the annual percentage change in the administered prices CPI

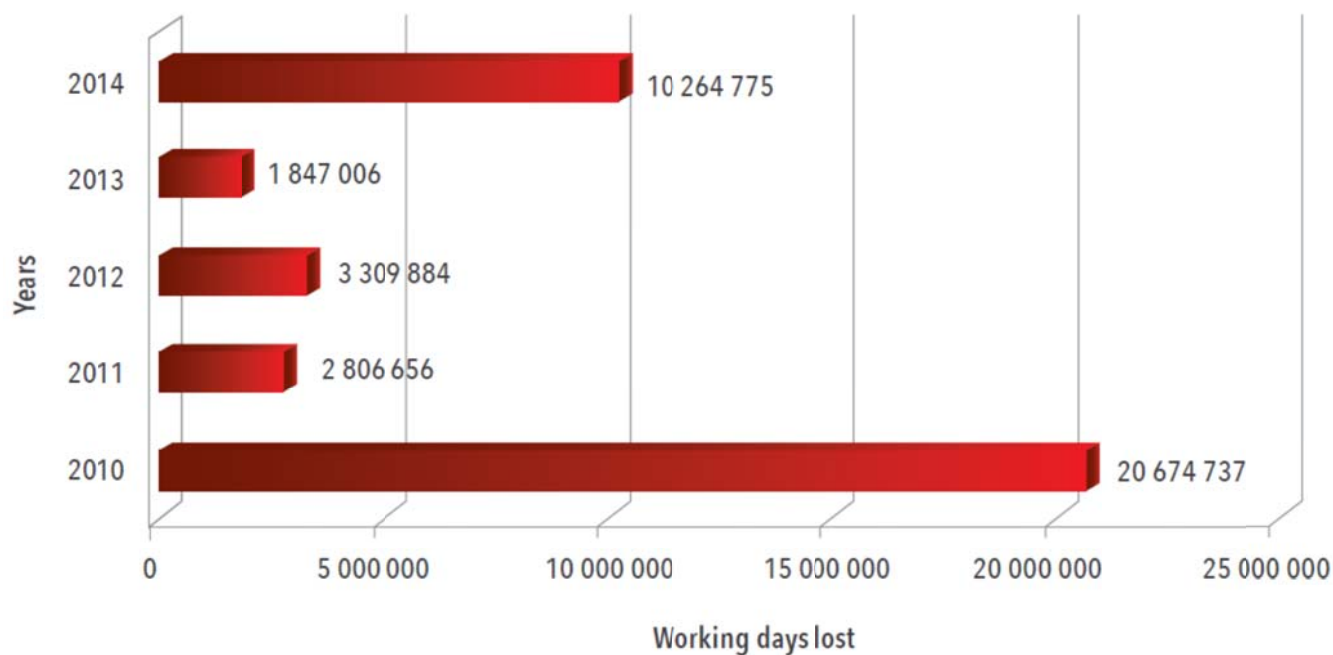
Group	Contribution	
	Feb 2016	Mar 2016
Water supply	1,1	1,1
Assessment rates	0,6	0,6
Electricity	2,8	2,7
Unleaded petrol	5,2	1,0
Motor vehicle registration fees	0,1	0,1
Primary and secondary school fees	0,9	0,9
University fees	0,7	0,0
Residual	0,1	0,0
CPI for administered prices	11,5	6,4

Figure 1: Trends in the number of work stoppages in South Africa, 2010 - 2014



Source: Department of Labour, Strikes Statistics

Figure 2: Trends in working days lost* in South Africa, 2010-2014



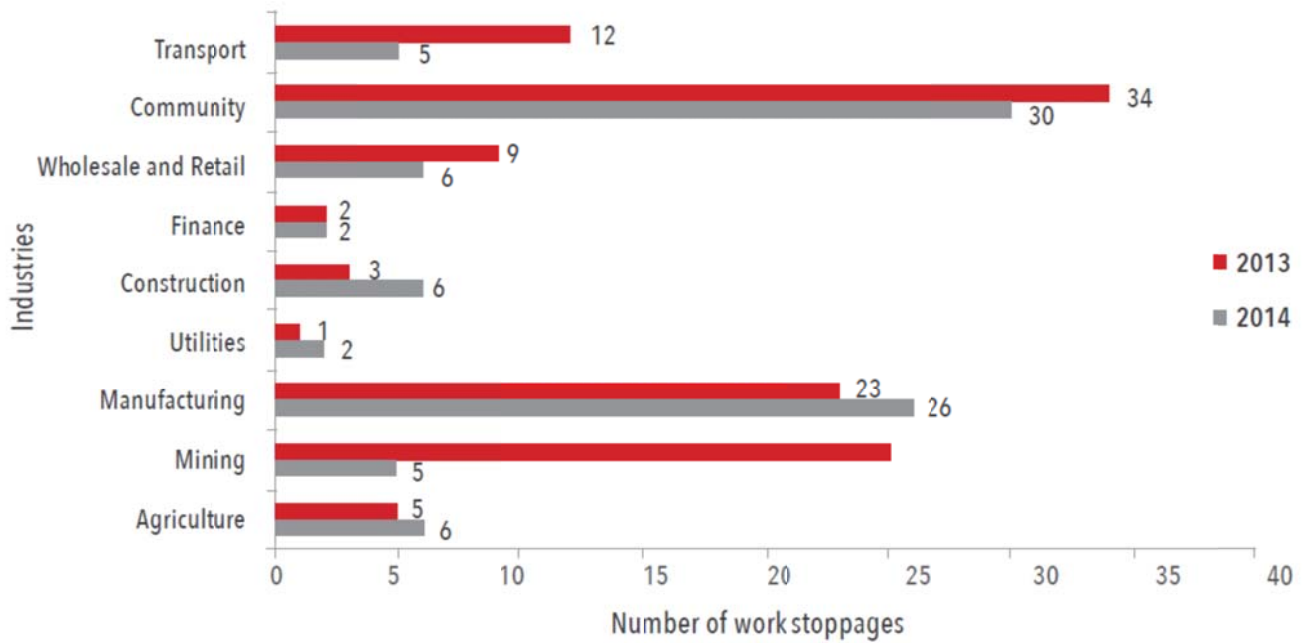
Source: Department of Labour, Strikes Statistics

Table 1: Distribution of work stoppages and wages lost by province*, 2013 and 2014

Province	Work stoppages				Wages lost (Rands)	
	2013	2014	% Change	Annual Average ⁹	2013	2014
Gauteng	97	99	2.0%	98	2 790 818 539	686 766 498
Western Cape	61	26	-57.3%	44	282 476 238	153 413 326
Mpumalanga	17	7	-58.8%	12	6 624 440	3 656 835
KwaZulu-Natal	44	32	-27.2%	38	217 917 033	126 135 375
Eastern Cape	33	9	-72.7%	21	88 216 194	34 246 430
Limpopo	17	12	-29.4%	15	20 460 233	2 307 881 033
North-West	12	12	0%	9	3 267 311 526	2 857 473 302
Northern Cape	3	-	-	2	53 000 000	-
Free State	18	1	-94.4%	10	5 284 281	7 286 483
Total	302	198	-34.4%	247	6 732 108 487	6 176 768 282

Source: Department of Labour, Strikes Statistics

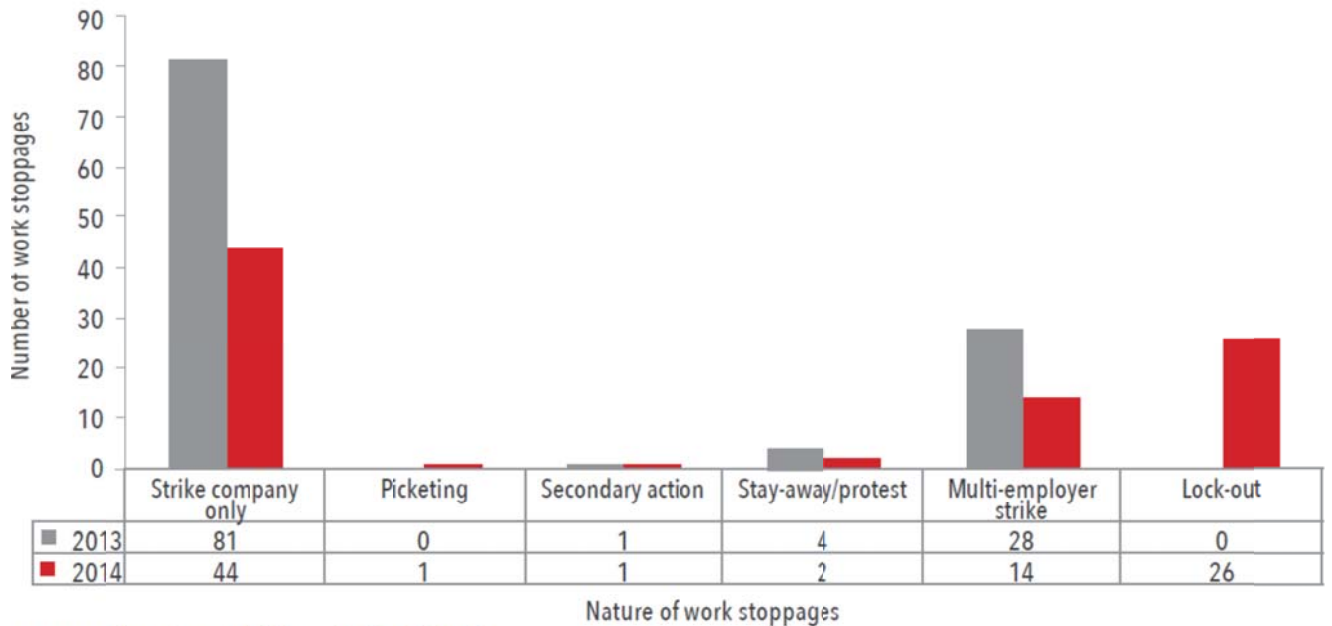
Figure 7: Distribution of work stoppages by industry, 2013 and 2014



Source: Department of Labour, Strikes Statistics

2.7. Nature of work stoppages

Figure 8: Distribution of work stoppages by their nature, 2013 and 2014



Source: Department of Labour, Strikes Statistics