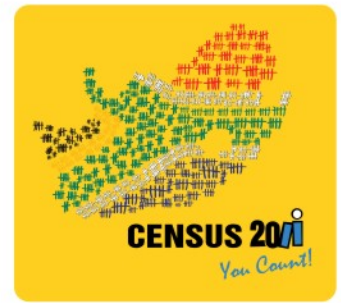




# What to expect



1

A preparation phase from **24 August -10 September**, called **Listing** where Stats SA fieldstaff will visit enumeration areas across the country to compile a register of dwellings to be visited during enumeration.



2

From **4 October** the Know your enumerator campaign to enable the public to recognise the fieldworker that will be working in your area.

Enumerators will be identifiable by their Census Identification badges, Census bibs/vests, bags, caps and folders.



3

Census night is the **9th October**, all people whom transient staying in institutions, hotels or similar accommodation will be counted.

Household **Enumeration - the Big Count** - will take place from **10 October-31 October**, with enumerators administering questionnaires.

Enumerators will count the homeless and tourists on census night, and households during the month of October.



4

Final **wrap-up operations** will be from **1-13 November**.

A **Post-Enumeration Survey** will run from **15 November to 15 December** to independently measure the quality and coverage of the census.



# What to do



X-123456789

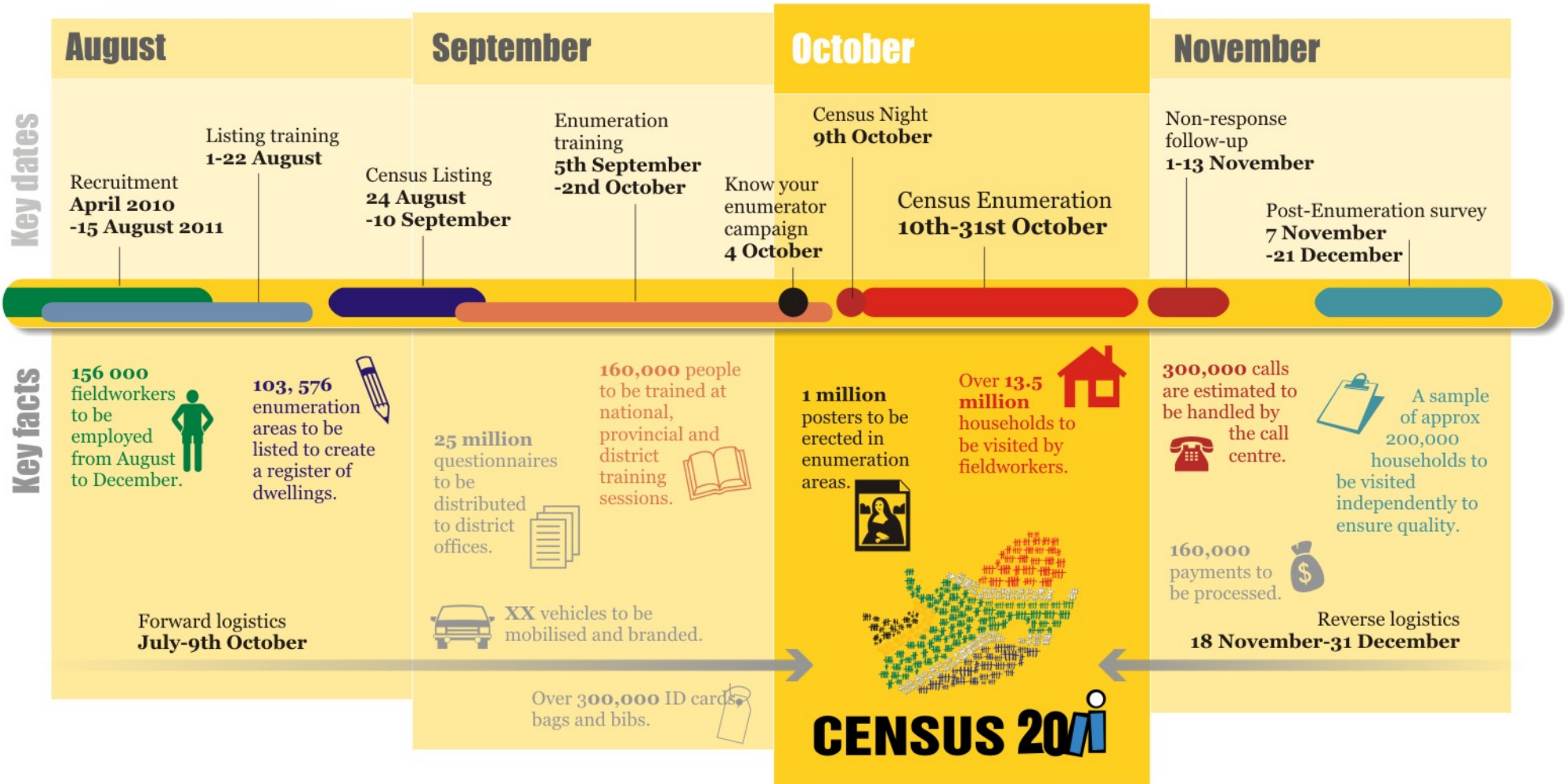
1. Ask the person for his/her official Census ID badge, if necessary follow-up at the call centre or our offices to verify employment.
2. You can choose to have the enumerator administer the questionnaire, **or** leave the questionnaire to self-complete, and arrange for a date for collection.
3. Answer **all** questions accurately.
4. One questionnaire will cover 1 household, so prepare yourself to answer questions on your household members income, employment, fertility, household goods.
5. **The information you give will be kept confidential, as per the Statistics Act 6, 1999.**
6. A barcode sticker will be left behind upon completion to verify your house was counted.

**031 360 0622/3**



**0800 11 0248**

# Census timeline



# Durban by numbers



In 2007 there were approximately 3,5 million people living in Ethekewini municipality, representing over a third of the provinces population.



For every 100 females, there were 97 males - men constituted 49% of the population.



Just over 70% of households in the municipality were living in formal in structures, and just less then 20% of households were living in informal dwellings. An average household had a total of 4 people, and 4 rooms.

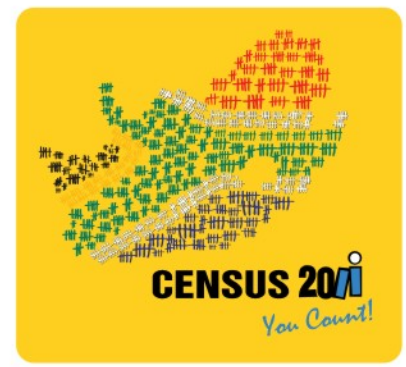


The average age was 28, and the municipality housed just under 40% of the working age (15-64) population of the province.



Black Africans constituted 70% of the municipalities population, with Indians/Asians just under 20%.

In 2007 there were  
**3,5 million**  
People living in Durban  
How many will  
there be in  
2011?



# KwaZulu-Natal at a glance

**1,1%**  
Population  
growth rate

**48.4** Life expectancy for  
males in KwaZulu-Natal

**79%** Households with  
access to piped water

KwaZulu-Natal  
unemployment rate **20,3%**

**10,8 million**  
The number of people living in KwaZulu-Natal

**25** The average age  
in the province

**1/3** The number of people aged  
under 15 as a proportion of  
the total provinces population



Sources: Statistics South Africa Census 2001, Community Survey 2007, Mid-year Estimates 2011, Labour Force Survey 2011

## How YOU count

The counting of South Africa will begin on the 10th October 2011, make sure you count. You can help by being accessible to census staff and be proactive to take steps to ensure that you are counted.



Contact us if you think you have been missed or have concerns to check the authenticity of our enumerators.

**031 360 0622/3**  **0800 11 0248**

# Mapping Ethekwini's population

Using data from Census 2001, each dot represents 200 persons, and the colour of the dot the dominant population group. It paints a vivid picture of the spatial pattern of settlement in the city. What will the results of Census 2011 show?

